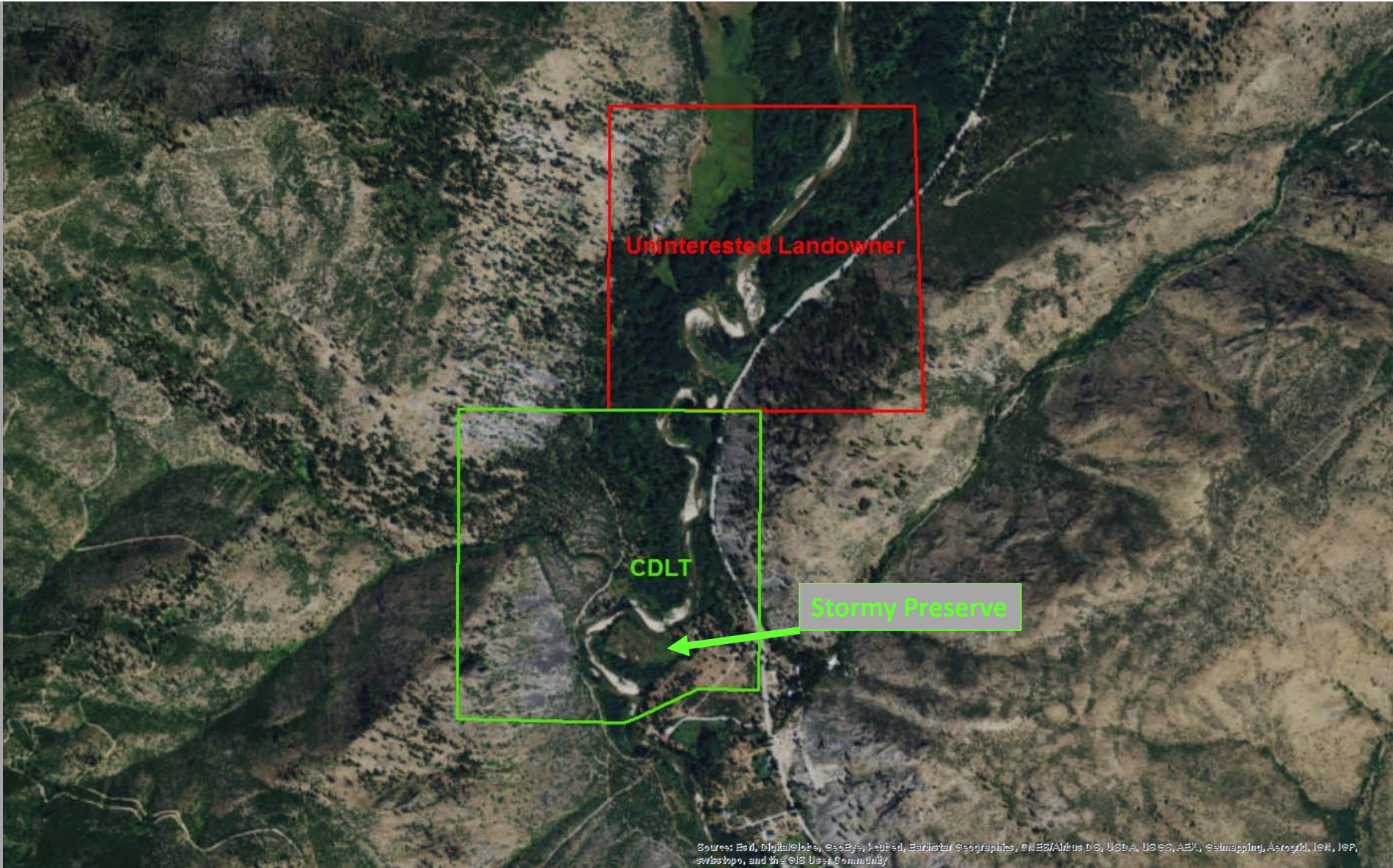


## Project Area C



Cascade Columbia Fisheries Enhancement Group



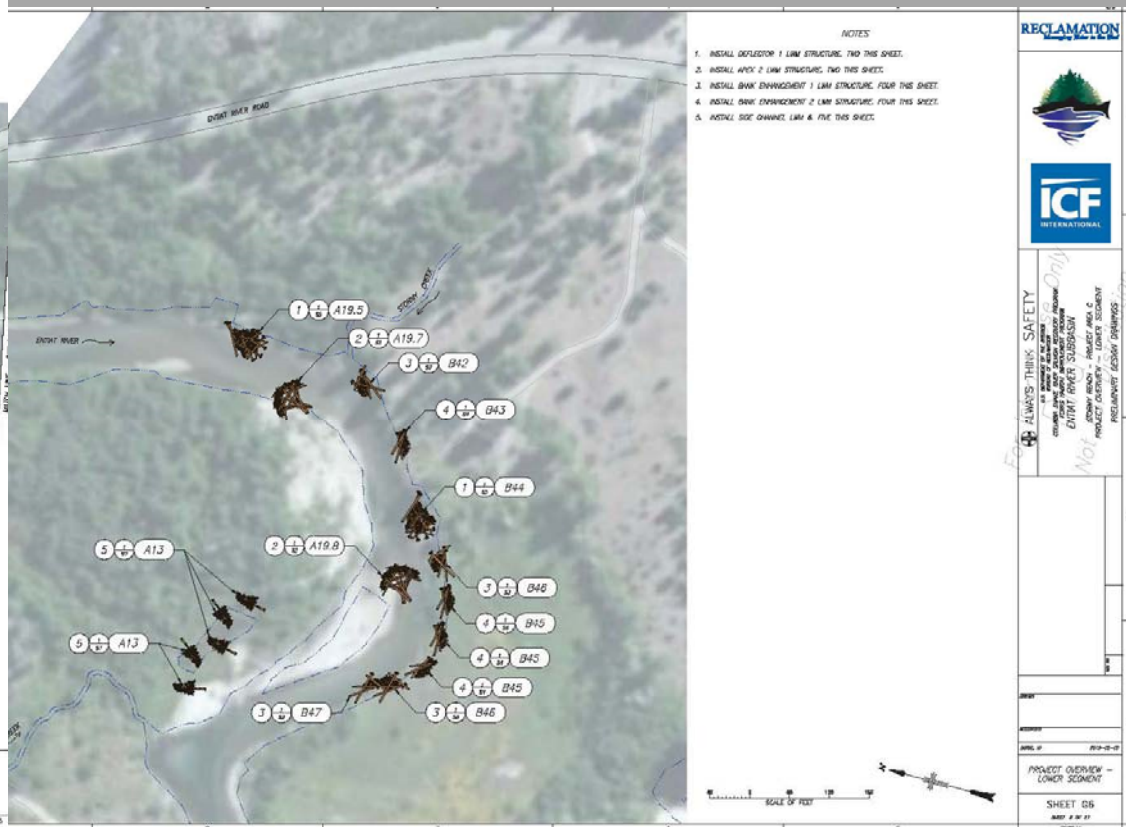
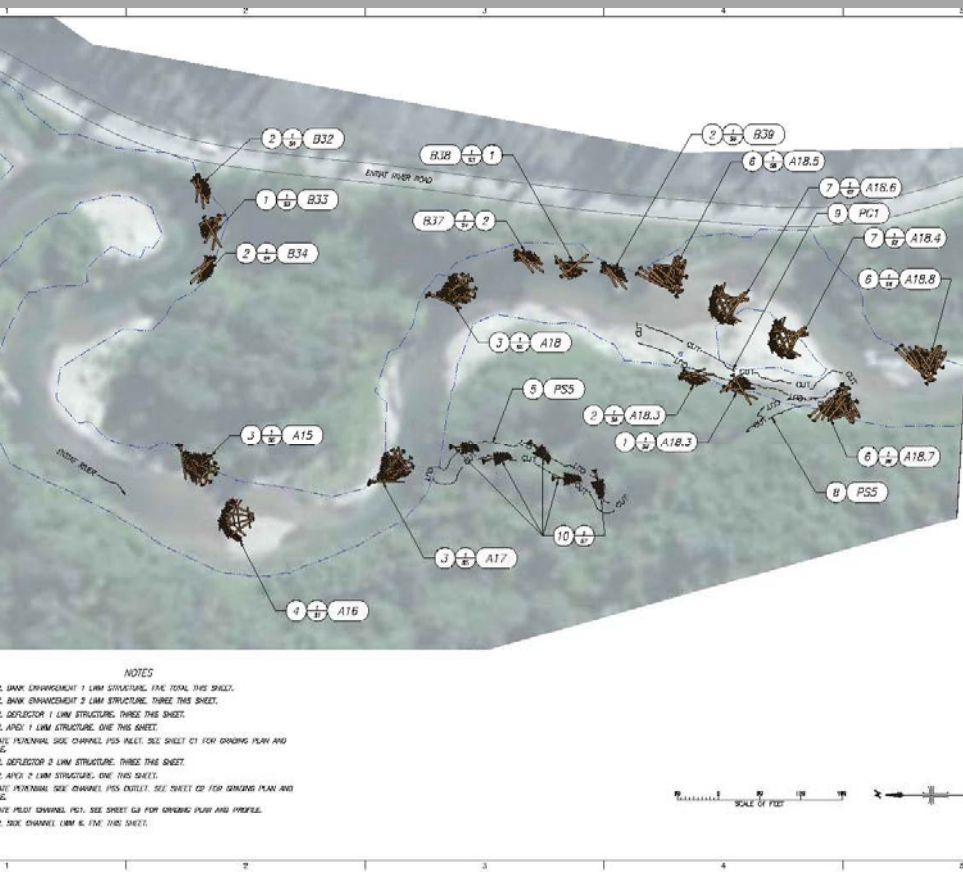
Uninterested Landowner

CDLT

Stormy Preserve

Sources: Esri, DigitalGlobe, GeoEye, IGN, AeriSat, CNES/Airbus DS, USDA, USGS, AeroGRID, IGN, IGP, swisstopo, and the GIS User Community





# STORMY REACH - PROJECT AREA C



**UPPER SEGMENT**  
PROJECT OVERVIEW - SEE SHEET G6  
ACCESS AND STAGING - SEE SHEET G8  
PLANTING PLAN - SEE SHEET L2

**LOWER SEGMENT**  
PROJECT OVERVIEW - SEE SHEET G7  
ACCESS AND STAGING - SEE SHEET G8  
PLANTING PLAN - SEE SHEET L3

RECLAMATION



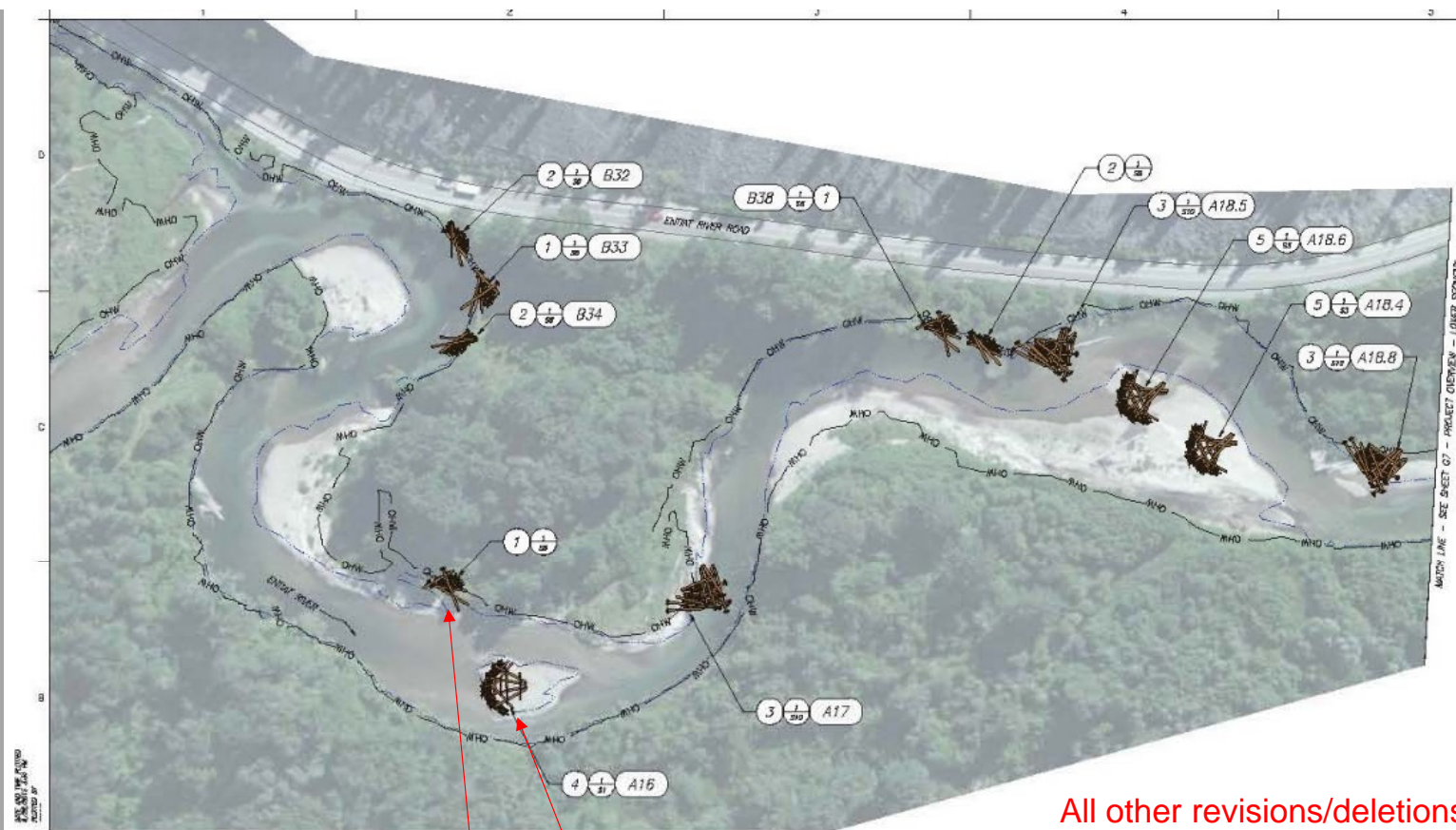
ALWAYS THINK SAFETY  
U.S. DEPARTMENT OF THE INTERIOR  
BUREAU OF RECLAMATION  
COLUMBIA RIVER SUBBASIN  
ENTIAH RIVER SUBBASIN  
STORMY REACH - PROJECT AREA C  
PROJECT OVERVIEW - PROJECT AREA C  
PRELIMINARY DESIGN DRAWINGS

DRAFT 60% PLANS

DATE: 2012-09-18  
PROJECT OVERVIEW - PROJECT AREA C  
SHEET G5  
0010614

60%





Revisions were made to A15 & A16 to allow for safer egress for recreation.

All other revisions/deletions were made to reduce access impacts, wetland impacts and improve constructability.

RECLAMATION  
Bridging Water to the Future



ALWAYS THINK SAFETY

FOR YOUR PROTECTION  
ENTIAH RIVER SUBBASIN  
SPERRY REACH - PROJECT AREA C  
PROJECT OVERVIEW - UPPER SEGMENT  
PRELIMINARY DESIGN DRAWINGS

DRAFT 60% PLANS

DATE

APPROVED

DATE

PROJECT OVERVIEW - UPPER SEGMENT

SHEET G6

SHEET 6 OF 13

05/18/14

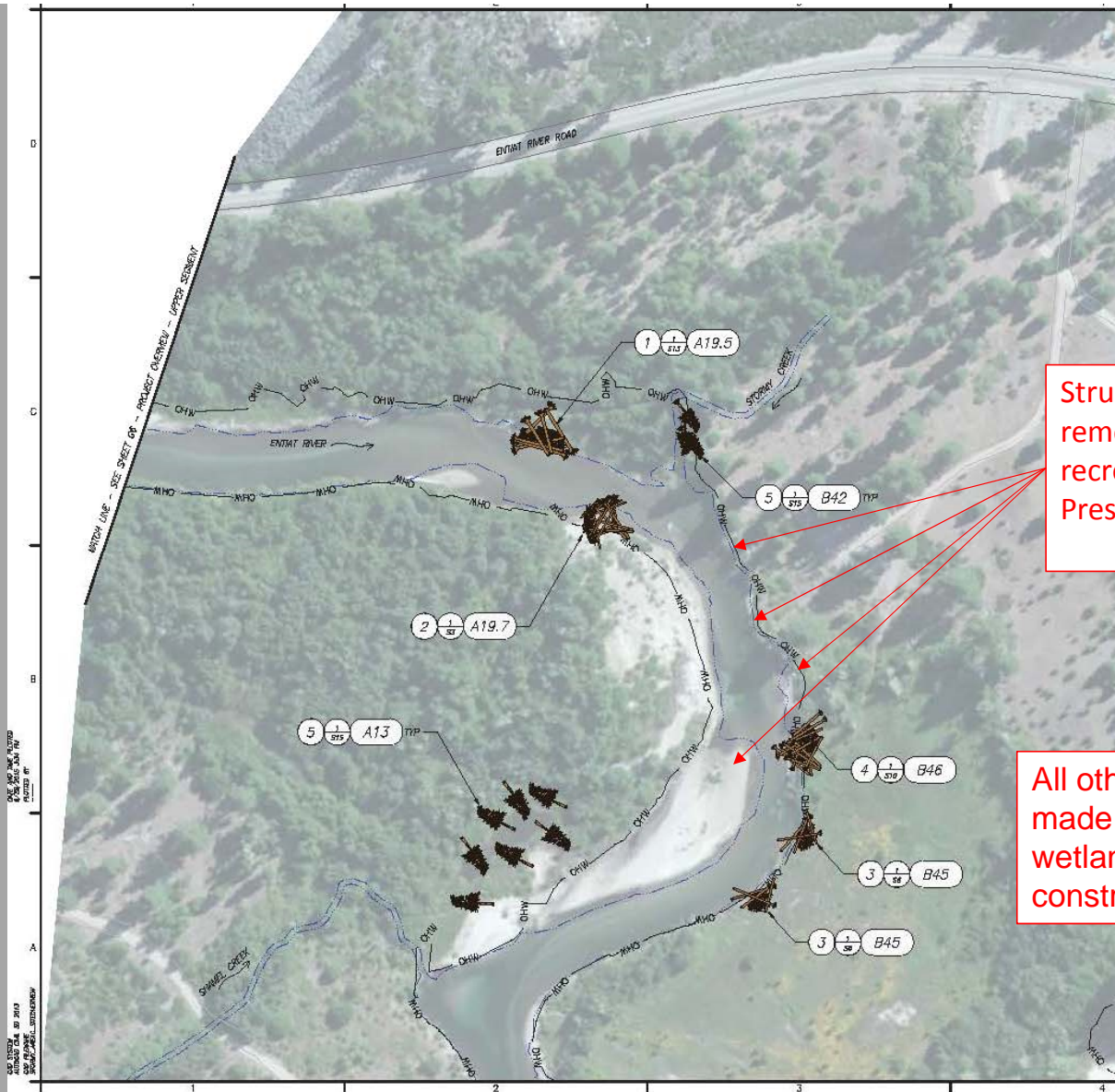




**Entiat2011-144**

6/9/2011 Lat=47.8295 Lon=-120.41717





#### NOTES

1. INSTALL HELICOPTER CONSTRUCTED 1 LWM STRUCTURE, ONE THIS SHEET.
2. INSTALL APEX 2 LWM STRUCTURE, ONE THIS SHEET.
3. INSTALL BANK ENHANCEMENT 1 LWM STRUCTURE, TWO THIS SHEET.
4. INSTALL DEFLECTOR 2 LWM STRUCTURE, ONE THIS SHEET.
5. INSTALL SIDE CHANNEL LWM 6. TEN THIS SHEET.

Structures B42 - B44 & A19.8 were removed to reduce impacts to recreation and conflict with Stormy Preserve launch/takeout.

All other revisions/deletions were made to reduce access impacts, wetland impacts and improve constructability.

RECLAMATION  
BUREAU OF RECLAMATION  
U.S. DEPARTMENT OF AGRICULTURE



ALWAYS-THINK SAFETY

ICE REMOVAL AT ENTIA RIVER

COUNTY OF KENAN

ENTIA RIVER SUBBASIN

STORMY REACH - PROJECT AREA C

PROJECT DESIGN - LOWER SEGMENT

PRELIMINARY DESIGN DRAWINGS

DRAFT 60% PLANS

DATE

DESIGNER

SCALE

10/13-08-08

PROJECT OVERVIEW - LOWER SEGMENT

SHEET 67

SHEET 7 OF 43

08/14/14





Entiat2011-146

6/9/2011 Lat=47.82467 Lon=-120.41967