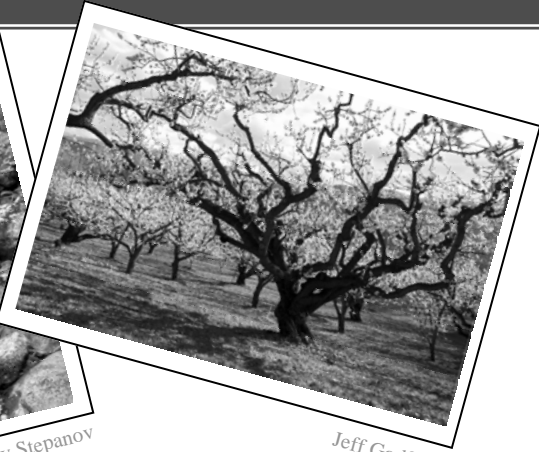


# CONSERVATION QUARTERLY

WINTER 2010



Sy Stepanov



Jeff Godfrey

## “PICTURE THE WENATCHEE” CALENDARS NOW AVAILABLE

In celebration of everything the Wenatchee River watershed provides, the Cascadia Conservation District sponsored the “Picture the Wenatchee” watershed photo contest. Photos were solicited for five categories including plants, wildlife, agriculture, recreation and landscapes. Over one hundred entries were submitted and exhibited by category at participating businesses in the watershed.

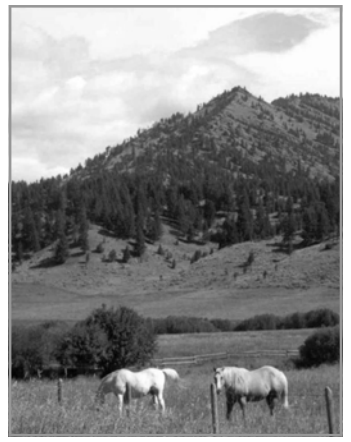
Three winning entries and one honorable mention were selected from each category and included in a 2010 watershed stewardship calendar. Combined with contestant responses to the question “*What does the Wenatchee River watershed mean to you?*”, the photos reflect the extraordinary natural beauty of the area and remind us why we are happy to call it *home*.

**Complimentary copies of the calendar are available by calling our office at (509) 664-9370 or by visiting [www.cascadiacd.org](http://www.cascadiacd.org).**

## WORKSHOPS PLANNED FOR SMALL ACREAGE LANDOWNERS

The WSU Extension, Cascadia Conservation District, and Barn Beach Reserve will be hosting a series of five workshops demonstrating good stewardship practices for small acreage landowners.

The series will teach landowners how to sustainably and productively manage resources on their property by expanding their knowledge of the interrelationships between soil, water, plants, animals and people. Workshop topics include inventorying resources, soil and water quality, pasture management, and livestock management. The final workshop covers ideas and resources for those interested in potentially making money off their land.



The workshops will be held in the Barn Beach Reserve Barn at 347 Division Street in Leavenworth on **February 27, March 27, April 24, May 22 and June 19**. Class times will be from 9 am to noon and a field visit will follow each class beginning in March. Participants can choose to sign up for individual workshops for \$20 each or all five workshops for \$90. Those who sign up for the full suite of courses will receive a resource book and completion certificate as an added bonus.

**The registration deadline is February 19.** A copy of a brochure describing the workshops and a link to the online registration option can be found on our website at [www.cascadiacd.org](http://www.cascadiacd.org). Brochures are also available at the Barn Beach Reserve in Leavenworth and the WSU Chelan County Extension office in Wenatchee.

POSTAL CUSTOMER

Non-Profit Org.  
US POSTAGE  
PAID  
PERMIT # 40  
Wenatchee, WA  
ECRWSS

## 2010 Native Plant Sale



See page 3 for more information and an order form.

## VOLUNTEERS HELP RESTORE LOCAL CREEK

In partnership with the Chelan County Public Works Department, the Cascadia Conservation District recently implemented a three acre streamside restoration project along Beaver Creek on the Stonewater Ranch property, formerly the Alpine Boy's Ranch, in Plain.

Beaver Creek is home to threatened and endangered fish species including bull trout and spring Chinook salmon. The project site cuts through an open field devoid of vegetation that provided few ecological benefits.

The objective of the project was to improve fish and wildlife habitat and water quality by planting the site with native streamside vegetation.

*"Involving volunteers in the project allowed us to ignite a new excitement and understanding of conservation in a young group of kids."*

- Sam Huhn  
AmeriCorps Member

Members of the Washington Conservation Corps, a branch of the AmeriCorps program, planted the majority of the site under guidance from the sponsoring entities. Cascadia Conservation District AmeriCorps member, Sam Huhn also helped organize and host a very successful volunteer event in support of the project.

On October 10 a handful of community volunteers joined members of a youth group from Moses Lake to spend half of a Saturday assisting with the streamside restoration project.

For most of the young volunteers, it was their first taste of planting and proved to be an effort they took great pride in. *"Involving volunteers in the project allowed us to ignite a new excitement and understanding of conservation in a young group of kids."* remarked Huhn.

All of the volunteers expressed delight in their contribution to the project and look forward to watching their "legacy" mature over time. In addition to providing volunteers with a sense of



Volunteers of all ages participated in the Beaver Creek streamside restoration project last October.

accomplishment, the project will help improve water quality and provide effective habitat for local fish and wildlife. It will also offer an educational tool for future visitors to the Stonewater Ranch facility.

The Chelan County Public Works Department and Cascadia Conservation District would like to thank all of the volunteers and Stonewater Ranch for their contributions. The Beaver Creek streamside restoration project was a great success and a memorable experience for all.



## INTENSIVELY MONITORED WATERSHED

### A STRATEGIC APPROACH TO STREAM HABITAT RESTORATION

If current trends continue, Pacific salmon and steelhead populations in the Upper Columbia River have a greater than 55 percent chance of extinction in the next 100 years. Millions of dollars are spent each year to try and reverse this trend, but populations are still far from recovery levels and questions remain regarding the individual and combined effectiveness of restoration efforts implemented thus far.

Evaluating the response of fish populations to restoration activities is complicated. It requires an understanding of how different management actions interact to affect habitat conditions and how targeted species and the systems they rely on respond to the altered habitat conditions.

A new cycle of restoration and monitoring efforts planned in the Entiat River watershed aim to address these issues by prescribing a deliberate schedule of habitat restoration projects coordinated with intensive monitoring efforts. This strategy is referred to as an Intensively Monitored Watershed, or IMW, and relies heavily on the cooperation of project partners and private landowners.

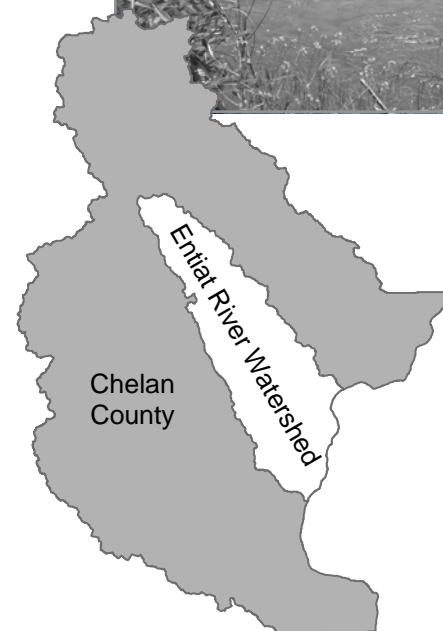
Under the Entiat IMW approach, implementation and monitoring are tightly coordinated to maximize the ability to detect responses of fish populations to changes in their habitat. Project implementation will occur in pulses, with all actions in a given year focused in selected reaches.

The IMW will accelerate project implementation above past levels and help partners to determine what types of habitat restoration actions did and didn't work. All in all, this information will help ensure that future funding is directed toward restoration actions that provide the "biggest bang for our buck".

The first focus of the Entiat IMW will be the upper Entiat and Stillwater reaches. Project design, permitting and funding coordination are well underway. Implementation is scheduled to begin in 2011. Ongoing monitoring efforts will continue until project implementation is completed in 2020 and beyond if necessary. For more information on the program contact our office at (509) 664-9370.



Above: The Stillwater Reach is one of the initial targets of the Entiat IMW. Project design, permitting and funding coordination are well underway. Habitat restoration projects are scheduled for implementation in 2011.



Left: The Entiat River watershed is one of four major watersheds in Chelan County.



# ANNUAL NATIVE PLANT SALE

The Cascadia Conservation District is now accepting orders for our annual native plant sale. This year we will be offering thirteen different plant species suitable for a variety of planting projects.

All but one of the species we are offering are native to eastern Washington. Many of the plants are also considered fire-resistant and make excellent choices for your FireWise landscape.

The plants are available as bare root stock, meaning they do not come in pots or burlap bags. They are harvested from the field in winter when the plants are dormant and arrive ready to be replanted in your landscape.

They are sold in bundles of 10 stems with the exception of the Ponderosa pine, and the upland and riparian mix options. The Ponderosa pine are offered in either bundles of 25 stems or bags of 200 stems. The upland or riparian mixes include 5 stems of each of the four associated plant species for a total of 20 stems per mix.

An order form is included below. A color brochure with photos and information on the plant species we are offering is available on our website at [www.cascadiacd.org](http://www.cascadiacd.org) or by calling our office at (509) 664-9370.

**All orders must be received by February 26.** Plants are sold on a first-come, first-serve basis and quantities are limited. A minimum 50% deposit is required to guarantee your order. Fully prepaid orders are appreciated. We are sorry, but we are unable to accept credit cards at this time.

When completing your order form please be sure to select one of two available pick-up dates. Plants will be distributed at the Stemilt Growers Warehouse in north Wenatchee. A map to the pick-up site will be sent to you along with a reminder as your selected pick-up date draws near. Any plants that are not claimed will be considered abandoned and used for conservation projects, so be sure to mark your calendar so you don't forget what date you selected. There are no refunds for plant orders not picked up.

## Stock Types

### 1-0 hardwood (1-0)

Grown in seedbed for one year and typically range in size from 8"-18". They represent the smallest stock type and therefore the easiest to plant correctly, however, they are more easily choked out by competing vegetation so plan for weed control.

### 2-0 seedling (2-0)

Grown two years in seedbed and typically range in size from 18"-60". They are bigger and better able to compete with surrounding vegetation and withstand light to moderate browsing by wildlife.

### plug-1 transplant (P-1)

Grown for one season in greenhouse then transplanted into ground for one season resulting in larger root system. Most survivable and vigorous stock type.

### cuttings

Unrooted 36" cuttings, or "live stakes". Very easy to plant, often requiring a tamping bar of some sort to create a hole.

Cascadia Conservation District



## 2010 Native Plant Sale

Name: \_\_\_\_\_  
Mailing Address: \_\_\_\_\_  
Phone Number: \_\_\_\_\_  
Email Address: \_\_\_\_\_

### Ordering Instructions

1) Complete order form.

2) Select pick-up day.

March 20  
9 am-1 pm

April 10  
9 am-1 pm

Plant distribution will take place at the Stemilt Growers Warehouse in north Wenatchee.

A map to the pick-up site will be mailed to you with your receipt.

3) Bring/mail order form and payment to:

Cascadia Conservation District  
215 Melody Lane  
Wenatchee, WA 98801

Questions?  
(509) 664-9370

Plant	Stock	Size	Sold As	# of Bundles	Price/Bundle	Order
<i>Conifers:</i>						
Ponderosa Pine	P-1		bundle(s) of 25	_____	@ \$30.00 each	= _____
Ponderosa Pine	P-1		bag(s) of 200	_____	@ \$120.00 each	= _____
Douglas Fir	2-0		bundle(s) of 10	_____	@ \$30.00 each	= _____
<i>Upland Plants: (* denotes plants that are also suitable for riparian areas)</i>						
Woods Rose	1-0	12" +	bundle(s) of 10	_____	@ \$14.50 each	= _____
Serviceberry *	1-0	6-12"	bundle(s) of 10	_____	@ \$14.50 each	= _____
Tall Oregon Grape	1-0	12" +	bundle(s) of 10	_____	@ \$14.50 each	= _____
Mock Orange*	2-0	12" +	bundle(s) of 10	_____	@ \$14.50 each	= _____
Upland Mix		(5 stems of each of the above)		_____	@ \$29.00 each	= _____
<i>Riparian Plants:</i>						
Pacific Willow	cutting	36"	bundle(s) of 10	_____	@ \$10.50 each	= _____
Quaking Aspen	1-0	12" +	bundle(s) of 10	_____	@ \$12.50 each	= _____
Red Osier Dogwood	1-0	12" +	bundle(s) of 10	_____	@ \$12.50 each	= _____
Rocky Mt. Maple	1-0	12" +	bundle(s) of 10	_____	@ \$14.50 each	= _____
Riparian Mix		(5 stems of each of the above)		_____	@ \$27.00 each	= _____
<i>Other Offerings:</i>						
Austrian Pine	2-0	10" +	bundle(s) of 10	_____	@ \$5.00 each	= _____
Vine Maple	1-0	12" +	bundle(s) of 10	_____	@ \$15.00 each	= _____
Snowberry	1-0	12" +	bundle(s) of 10	_____	@ \$12.50 each	= _____

Minimum 50% deposit is required to guarantee order.  
Fully prepaid orders are greatly appreciated.

We are sorry, but we are unable to accept credit cards at this time.

Subtotal = \_\_\_\_\_  
Add 8.1% WA State Sales Tax = \_\_\_\_\_  
Total = \_\_\_\_\_

## DISTRICT RECOGNIZED BY STATE AND FEDERAL PARTNERS

The work of the Cascadia Conservation District was recently recognized at both the state and federal levels. The Washington Conservation Commission named Cascadia the 2009 North Central Area Conservation District of the Year, and Josh Koempel the 2009 Supervisor of the Year. The USDA's Natural Resources Conservation Service (NRCS) also honored District Administrator Peggy Entzel with the 2009 District Employee Partnership Award.

The Conservation Commission noted that, "*Cascadia has established a working relationship with a variety of different agencies and interest groups to accomplish conservation activities for and with the landowners of Chelan County.*" They also cited the more than fifty funding contracts worth an estimated \$1.2 million brought to the local economy as further support for the nomination of District of the Year.

It made sense, then, that the people overseeing the organization would also be recognized. Josh Koempel has served on the District Board since 2004 and, "*...is an active participant in the business of the District, offering both leadership and support to the Board and staff.*" Peggy Entzel has been with the District for twenty-five years. During her tenure she has provided valuable assistance to NRCS staff at the Wenatchee Field office and critical support for various NRCS programs.

Peggy Entzel felt honored to receive the Partnership Award. "*I truly believe partnerships are critical to getting conservation work implemented in the most efficient and cost effective manner*", shared Entzel. These awards are further evidence of the excellence Cascadia strives for in serving the citizens of Chelan County.

## CORRECTION

The article titled "Volunteers Make River Clean-Up a Success" in our Fall 2009 newsletter was incomplete. The final paragraph was cut off part way through, and should have read...

In the meantime, the Chelan County Natural Resource Department will be continuing clean-up efforts by tackling large debris in the mainstem Wenatchee River through a grant from the Washington State Department of Ecology. For more information on these efforts contact the Natural Resource Department office at (509) 667-6533.



**CASCADIA**  
CONSERVATION DISTRICT

215 Melody Lane Wenatchee, WA 98801  
(509) 664-9370 • www.cascadiacd.org

### Board of Supervisors

Josh Koempel, *Chair*  
Bob Boyd, *Vice Chair*  
Hal Hawley, *Auditor*  
Frank Andrews, *Member*  
Roger Wristen, *Member*  
Jim Bartelme, *Associate*  
Larry Cordes, *Associate*  
Conard Petersen, *Associate*  
Nick Chambers, *Associate*

This newsletter is funded in part by grants from the Washington State Conservation Commission, the Washington State Department of Ecology and other public and private granting entities.



Please Remember to Recycle

### Staff Members

Peggy Entzel, *District Administrator*  
Valerie Hampton, *Administrative Assistant*  
Nada Wentz, *Office Assistant*  
Michael Rickel, *Program Manager*  
Kurt Hosman, *Project Coordinator*  
Mark Amara, *Archaeologist*  
Francoise Sweeney, *Archaeologist*  
Kim Lancaster, *Archaeologist*  
Heather Java, *Resource Specialist*  
Kate Koenig, *Resource Specialist*  
Phylisha Olin, *Resource Specialist*  
Sarah Rudback, *Resource Specialist*  
Mike Sandidge, *Resource Specialist*  
Sam Huhn, *AmeriCorps Member*

## UPCOMING MEETINGS & EVENTS

### Cascadia Conservation District February Board Meeting

February 18 from 3:30 pm to 5 pm at 215 Melody Lane in Wenatchee

- Meeting is open to the public. Attendees are asked to check in at the front desk for the meeting room assignment.

### Living on the Land: Setting the Stage & Inventorying Your Resources

February 27 from 9 am to noon

Barn Beach Reserve Barn at 347 Division in Leavenworth

\$20 per individual session or \$90 for all five sessions

- First of five sessions to help you sustainably and productively manage your small acreage property. Presented in collaboration with WSU Extension and the Barn Beach Reserve.

### Volunteer Opportunity: Annual Native Plant Sale—Plant Preparation

March 13 from 9 am to 2 pm at the Stemilt Growers Warehouse

- RSVP recommended.

### Volunteer Opportunity: Annual Native Plant Sale—Plant Distribution

March 20 & April 10 from 9 am to 1 pm at the Stemilt Growers Warehouse

- RSVP recommended.

### Annual Native Plant Sale—Plant Distribution

March 20 & April 10 from 9 am to 1 pm at the Stemilt Growers Warehouse

- Orders due by February 26—see page 3 for more information.

### Living on the Land: Soil & Water Quality

March 27 from 9 am to noon with site visit to follow

Barn Beach Reserve Barn at 347 Division in Leavenworth

\$20 per individual session or \$90 for all five sessions

- Second of five sessions to help you sustainably and productively manage your small acreage property. Presented in collaboration with WSU Extension and the Barn Beach Reserve.

### Volunteer Opportunity: Board of Supervisors

Applications for the appointed position are due March 31

- Join the Board of Supervisors and help direct the work of your local conservation district.

**For more information on any of the meetings and events listed above, call our office at (509) 664-9370 or visit our website at [www.cascadiacd.org](http://www.cascadiacd.org).**



**Native Plants of Central Washington**  
for  
**Restoration and Landscaping**

- Over 125 species to choose from!
- Nursery is open March–November

**Derby Canyon Natives**

Peshastin, WA Tel: (509)548-9404 [www.derbycanyonnatives.com](http://www.derbycanyonnatives.com)

**DEEPROOTS**  
Landscaping & Nursery, Inc.



(509) 679-0154 • [www.deeprootslandscapes.com](http://www.deeprootslandscapes.com)

- Landscape design & installation specialists.
- Growers of native plants including landscape ready trees, shrubs & perennials.

**Nursery open by appointment only. Call us today!**