

CONSERVATION QUARTERLY

FALL 2022

This institution is an equal opportunity provider.

LANDOWNER SPOTLIGHT: DIAMONDBACK ACRES GROWING GOOD FRUIT WITH CONSERVATION IN MIND

Contributed by Phil Simmons, Horticulturist, Diamondback Acres

Orchard Photo by: Elizabeth Jackson

The mission of Diamondback Acres is to preserve and restore Lake Chelan farmland whilst growing the most sought-after fruit in the world. By farming the land, we are able to save it from urbanization and allow it to continue serving as a home for local wildlife. Using conservation practices on the farm is essential to what we do as it helps us create the symbiotic relationship between the soil, trees and fauna that is needed to grow the best possible fruit.

Diamondback Acres was started in 1991 by Bill and Angel Clark. The Clarks started growing apples and then as the farm grew in acreage, they began growing cherries and blueberries. Diamondback acres is located in a beautiful high point overlooking Lake Chelan with the Cascades in the distance.

We use intensive Integrated Pest Management (IPM) to reduce use of pesticides wherever possible. Mechanical weed removal is the custom control

method so herbicide use has been completely eliminated from the farm. Low output irrigation systems have been installed with irrigation probes that allow us to save water while keeping the soil and trees at their optimum level of water saturation for bountiful production. The installation and use of efficient irrigation systems and probes has helped us to save water, avoid fertilizer run off and soil erosion, and keep our trees at their healthiest. Planting pollinator habitat bolsters our local bee population by incorporating more native bee populations, which has helped our operation during cold spring weather when standard honeybees may not leave their hives as much. Using IPM strategies we have been able to drastically cut down on our chemical inputs, saving us time and money.

DIAMONDBACK ACRES GOES SALMON-SAFE:

We were inspired to become Salmon-Safe when we realized we were doing more conservation work than required by the Washington State Department of Agriculture (WSDA) for our organic certification and wanted to do even more. We thought Salmon-Safe would be a great way to highlight the work that we were doing and a good resource to find other practices that we could implement on the farm. Salmon-Safe has been a great source of information and contacts for conservation supplies and practices such as native plant resources, kestrel hawk boxes, and low output irrigation funding.



Vineyard Photo by: Elizabeth Jackson

Salmon-Safe has helped us break into new markets, acquire grants to implement conservation measures, and set us apart from other growers for the community.

Cascadia Conservation District has helped us find sources of necessary supplies to achieve our conservation goals such as local native plant nurseries and irrigation designers. The Conservation District has also kept us updated on the most recent funding sources from grants and state programs that could provide cost-share on large conservation projects for our farm, like a commercial composting site or efficient irrigation systems on larger acres.

Contact Cascadia CD at info@cascadiacd.org or (509) 436-1601.

POSTAL CUSTOMER
LOCAL

Non-Profit Org.
US POSTAGE
PAID
PERMIT # 40
Wenatchee, WA
ECRWSS

Cascadia Conservation District
14 N Mission St
Wenatchee, WA 98801

DO YOU ENJOY OUR NEWSLETTER?

If so please scan the QR code!

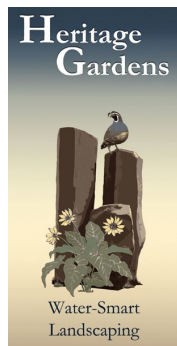
(Your response will be collected just by scanning the QR code.
Participating in the short survey is just bonus information for us.)



HERITAGE GARDENS:

REDUCE WATER USE IN URBAN LANDSCAPES

If you have ever considered incorporating native plants into your landscape, but were uncertain which plants to choose, then Cascadia is at your service! Our District now offers the Heritage Garden certification program to promote low water use landscapes using native plants. Heritage Gardens are also designed to honor the cultural and natural heritage of the Columbia River Basin while utilizing sustainable gardening techniques.



HONORING THE HERITAGE OF THE COLUMBIA RIVER BASIN

The Heritage Garden Program was started in the Tri-Cities area by the Benton Conservation District and the Columbia Basin Chapter of the Washington Native Plant Society (WNPS) over a decade ago. A partnership between Cascadia and the Wenatchee Valley Chapter of the WNPS was recently formed to provide these same program services at no charge to residents in Chelan County. Heritage Gardens allow homeowners to showcase the beautiful plant biodiversity of North Central Washington while reducing water-use and fertilizer applications through low-maintenance gardening practices. Once certified, you will receive

recognition of your thoughtful efforts. Heritage Gardens are created in all shapes and sizes, from those small, yet hard to irrigate corners, to entire yards; the choice is yours. The certification requires gardens to have at least 75% plants native to Washington State, include plants important to wildlife and of cultural significance, incorporate a geologic feature (rocks), and a watering schedule for plant establishment.



Photos by: Elizabeth Jackson

Harrison Scanga, 2.5 years old, plants Idaho fescue with parents Micah & Lauren on Make A Difference Day 2022.



Rotary club members and volunteers install a drip irrigation system to promote plant growth and survival.

The Wenatchee Rotary Club, in partnership with the City of Wenatchee, organized the event on Oct 22nd to plant a native pollinator garden in downtown Wenatchee. The garden is awaiting a Heritage Garden certification once plants are better established.

Cascadia staff can help design your garden and connect you with valuable resources to make your native garden a reality! Contact: (509) 436-1601.

NUTRIENT

ENHANCEMENT:

CRITICAL TO THE HEALTH OF RIVER ECOSYSTEMS

Contributed by Jason Lundgren, Cascade Fisheries

Historical estimates of salmon returning to the Columbia River basin range from 10-16 million, while modern returns average one million fish annually.

This significant decrease in spawning salmon dying and decomposing in streams, like the Entiat River, results in a drastic reduction of marine-derived nutrients such as phosphorus and nitrogen.

Photo credit: Ken Bevis



These nutrients are critical for river ecosystems to support healthy communities of aquatic and terrestrial plants and animals. Salmon carcasses provide marine-derived nutrients for the entire river basin when animals such as eagles and bears consume and move carcasses into the forest.

The concept of nutrient enhancement involves distributing either surplus hatchery salmon carcasses or salmon analog pellets to simulate the naturally dying salmon that would historically be present in streams.

The drastic reduction of naturally distributed carcasses and the nutrients released with their decay are a major limiting factor for the natural production of juvenile salmon throughout the Columbia River basin.

Currently, there are no plans to distribute salmon carcasses in the Entiat River, however, Cascade Fisheries and the US Fish and Wildlife-Entiat National Fish Hatchery would like to find beneficial uses for surplus hatchery salmon carcasses rather than sending them to the landfill.

For more information please contact Jason Lundgren, Executive Director, Cascade Fisheries at jason@ccfeg.org.

Be observant, be a good river neighbor!

Avoid disturbing river habitats during this spawning season.

- Be quiet and keep your distance from gravel riverbeds where adult female salmon build redds and lay eggs.
- Keep your dog leashed and out of the river.
- If you must cross the river, choose places with either sand or larger rocks.
- Do not build rock dams. Salmon need connected habitats.



**a salmon redd (nest)
un nido de salmón**



**CASCADE
FISHERIES**

www.ccfeg.org

¡Sea observador, sea un buen vecino del río!

Evite perturbar los hábitat fluvial durante esta temporada de desove.

- Guarde silencio y manténgase alejado de los lechos de los ríos de grava donde las hembras adultas del salmón contruyen nidos y ponen huevos.
- Mantenga a su perro con correa y fuera del río.
- Si debe cruzar el río, elija lugares con arena o piedras más grandes.
- No construyas presas de piedras. El salmón necesita hábitats conectados.

STUDENTS ASSIST WITH RESTORATION EFFORTS

ON EAGLE CREEK IN LEAVENWORTH

Students from Cascade School District's Discovery School assisted Cascadia staff, and a crew from the Washington Conservation Corps, in a riparian area restoration project on Eagle Creek. The riparian plantings will provide shade for fish, maintain cold water temperatures, provide habitat and increase stream complexity.

This WA Conservation Commission funded project is just one of many low-tech projects being implemented in the Chumstick Creek sub-watershed. These upper tributaries are important spawning grounds and juvenile rearing habitat for endangered Spring Chinook salmon and threatened steelhead and bull trout.

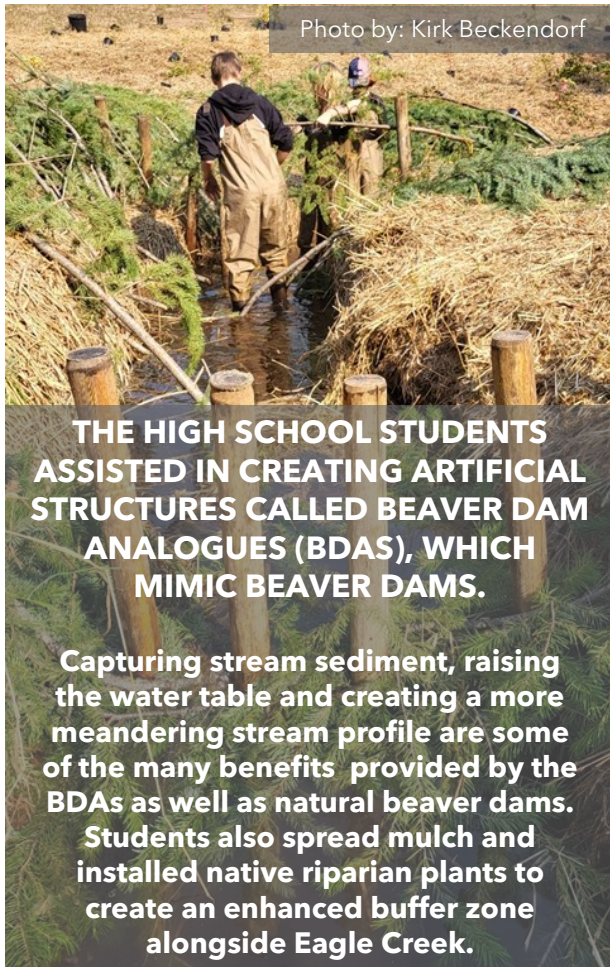


Photo by: Kirk Beckendorf

THE HIGH SCHOOL STUDENTS ASSISTED IN CREATING ARTIFICIAL STRUCTURES CALLED BEAVER DAM ANALOGUES (BDAS), WHICH MIMIC BEAVER DAMS.

Capturing stream sediment, raising the water table and creating a more meandering stream profile are some of the many benefits provided by the BDAs as well as natural beaver dams. Students also spread mulch and installed native riparian plants to create an enhanced buffer zone alongside Eagle Creek.

FUEL BREAK AND FOREST RESILIENCE PARTNERSHIP

Technical assistance along with financial assistance programs, which can cover 50-80% of the cost of work, to improve forest health and help protect critical infrastructure from wildfire damage.



WHO IS ELIGIBLE?

Private landowners in the Lower Peshastin to Upper Wenatchee area are eligible and encouraged to apply.

***Now accepting registration for spring site visits!**



FOR MORE INFORMATION:

Please scan the QR code or go to the link below to fill out our interest form: tinyurl.com/Forest-Resilience



USDA Natural Resources Conservation Service
U.S. DEPARTMENT OF AGRICULTURE

This project is made possible through a partnership agreement with USDA-NRCS Washington through the Regional Conservation Partnership Program, which is funded through the Farm Bill. USDA is an equal opportunity provider, employer, and lender.

12 MONTHS OF NATURAL BEAUTY

Thank you to all the wonderful photographers who made our 2022 photo contest another big success, and congratulations to those who captured the twelve winning photos!

Please visit our Facebook page (link at www.cascadiacd.org or use the QR code to the right) to see all entries.



The 2023 Picture Chelan County stewardship calendar featuring the winning photos will be out in early December. Funding for the calendar is provided by: WA Department of Ecology, US Bureau of Reclamation, and other local sponsors as featured in the calendar.

Visit Cascadia's office at 14 N Mission St. in Wenatchee to get your calendar!

THE 2022 WINNING PHOTOS ARE:

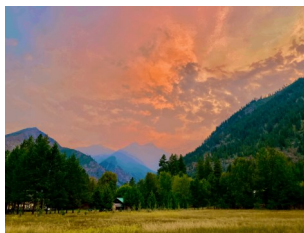
AGRICULTURE:

- Apple Bloom 2022 II by Darin B Case
- Blueberry Gift by Darin B Case



LANDSCAPE:

- Bolt Wildfire Smoke Over Icicle Canyon by Scott Mitchell
- Fall Leaves and Mountain Reflection by Karen Eadie



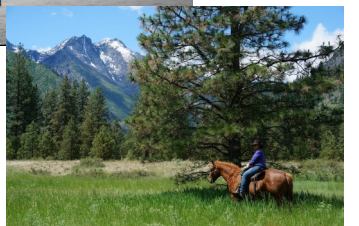
PLANTS:

- Frosty Mornings by Donna Kay Gaynor
- Summer Beginnings by John Barnes



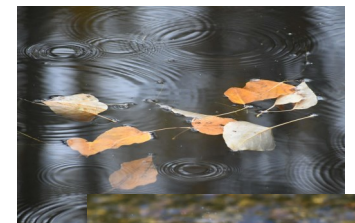
RECREATION:

- Going Places by TJ Franklin
- Kona and the Sleeping Lady by Brad Brisbine



WATER:

- Raindrops on Autumn Pond by Karen Eadie
- The Spawn by Tim Aemmer



WILDLIFE:

- Morning Moon by Cameron Hein
- Sleepy Owl by Cameron Hein



Join Us!

ENTIAT WATERSHED PLANNING UNIT

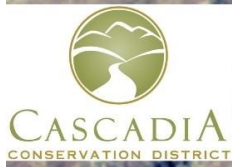


Photo credit: Oly Mingo &
Entiat Chamber of Commerce

Bringing people together to improve communication, reduce conflicts, address problems, reach consensus and implement actions to improve natural resource management on associated private and public lands in the Entiat watershed.

*To join the list please scan the QR code
or call (509) 436-1601*



CASCADIA
CONSERVATION DISTRICT

14 N Mission St Wenatchee, WA 98801
(509) 436-1601 • www.cascadiacd.org

Staff Members

Mark Amara, *Archaeologist*
Kirk Beckendorf, *Environmental Educator*
Kathleen Deason, *Administrative Assistant*
Patrick Haggerty, *Forestry Program Manager*
Valerie Hampton, *Financial Coordinator*
Alex Harwell, *Resource Specialist II*
Joe Hill, *Forest & Community Resilience*
Mark Ingman, *Resource Specialist II*
Elizabeth Jackson, *Resource Specialist II*
Lucas Lachica, *Resource Technician II*
Kim Lancaster, *Archaeologist*
Amanda Newell, *Education & Outreach*
Nada Wentz, *Office Assistant*
Ryan Williams, *Executive Director*

Board of Supervisors
Junell Wentz, *Chair*
Dillon Miller, *Vice Chair*
Amy Bridges, *Auditor*
Kurt Hosman, *Member*
Pete Teigen, *Member*
Larry Cordes, *Associate*
Josh Koempel, *Associate*

The Conservation Quarterly is published on a quarterly basis by Cascadia Conservation District and reaches over 38,000 households in Chelan County. This newsletter is funded in part by grants from the Washington State Conservation Commission and other public and private granting entities.

Please Remember to Recycle



UPCOMING MEETINGS & EVENTS

Cascadia Conservation District Board Meetings

Nov 18, Dec 16, Jan 20. Watch our website or call (509) 436-1601 for updates. Call-in or video conference options are available.

***Strategic planning in progress. Watch our website for updates & opportunities to participate.**

Entiat Watershed Planning Unit Meeting

Dec 7, 4-6 pm, Entiat Fire Station, 2200 Entiat Way
Call/Zoom participation available. Call (509) 436-1601 for details.

Chelan PUD: The Power Hour Q&A

12 pm on Weds, Nov 9. Livestreaming on youtube.com/chelanpud/live. Grab a lunch and join the final Power Hour of the season as we answer your questions live about the future of hydropower, clean energy, and keeping local electric rates low.
chelanpud.org/powerhour

Sustainable NCW: Waste Wizard

What goes where? How to recycle in NCW! To view the Waste Wizard, scan the QR code to the right or visit: sustainablencw.org/wastewizard



Wenatchee River Institute

- **Beginner Bird Walks:** Second Wed. every month from 8-9:30am @ WRI. All skill levels welcome. No reg. required!
- **Red Barn Event: Biochar Production:** Nov 2, 7-8pm @ Red Barn. Learn about this carbon-rich material from biomass. A new production facility is coming near Cole's Corner!
- **Red Barn Event: Lessons from the Mountains with Jeremy Jones:** Nov 12, 7-8pm in WRI's Red Barn. Professional snowboarder Jeremy Jones discusses his new book!
- **Red Barn Event: Sustainable Holidays:** Nov 17, 7-8pm in WRI's Red Barn. With Waste Loop, and Sustainable NCW learn how to minimize your waste this holiday season!
- **Winter Wreath Class:** Dec 9 at 9-11am or 1-3pm, or Dec 10 9-11am @ WRI. With WRI & Salt of The Earth craft a festive wreath and cheer up chilly days.
- **Snowshoe Strolls:** Select days in Jan & Feb. Learn about native wildlife and ecology, all while on snowshoes! All skill levels are welcome. Stay tuned for details!

Questions? Contact: programs@wenatcheeriverinstitute.org or 509-548-0181

A huge thank you to our volunteers & partners who helped us provide place-based, career-connected learning through our Kids in the Creek and Kids in the Forest programs this fall!



Also a huge thank you to the funders of these programs: WA Recreation & Conservation Office's No Child Left Inside Grant and WA Department of Ecology's Watershed Restoration Grant.

Education program contact: amandan@cascadiacd.org