

Presented by



2016/2017 Project Overview

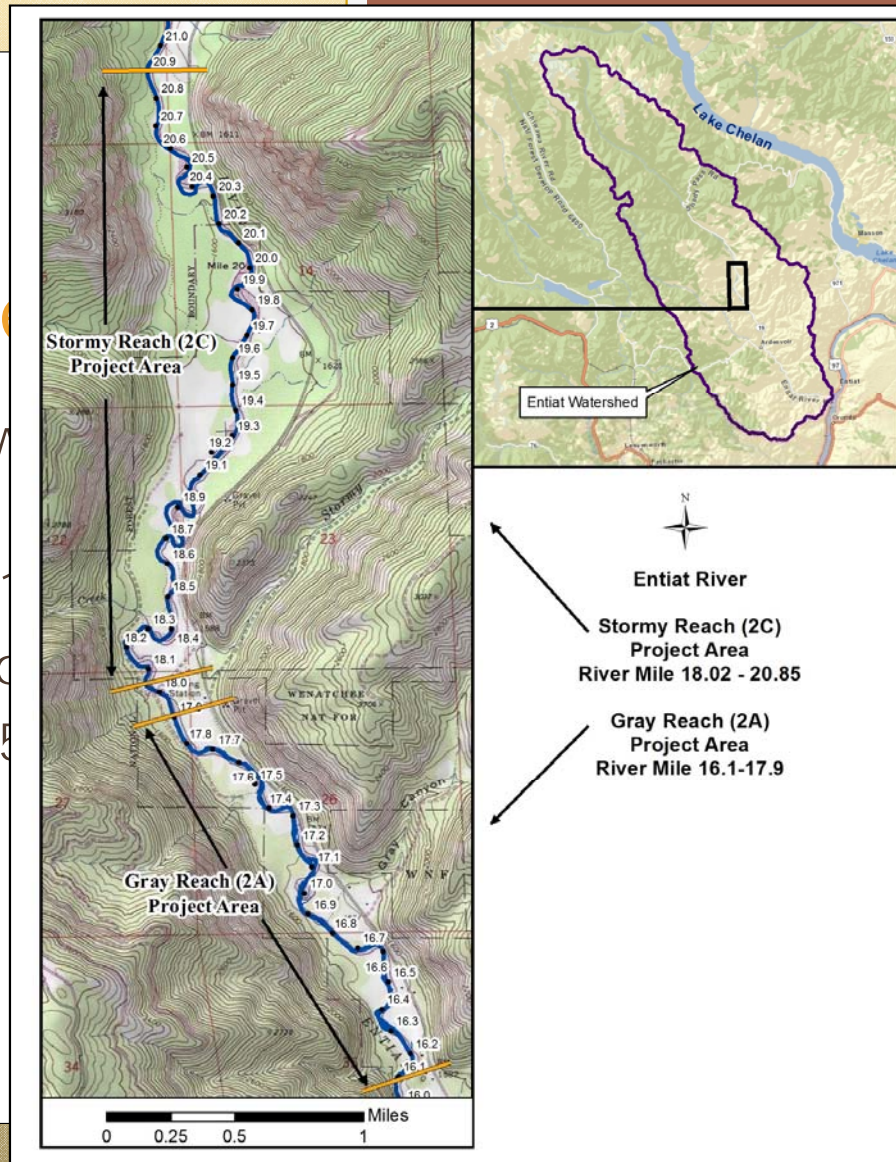
Middle Entiat IMW Implementation

Overview

- Project Overview
- Goals and Objectives
- Status Updates
- Timeline/Schedule
- Questions

Project Overview

- Project area is within the Entiat River
- About 4.5 miles long
- Approximately 1,000 acres
- One levee removal
- Approximately 5 miles of improvements



design

Project Overview

- Funded by
 - US Bureau of Reclamation
 - Bonneville Power Administration
- Current Participating Landowners
 - Chelan-Douglas Land Trust
 - WA Department of Natural Resources
 - USFS
 - Several private landowners

Goals and Objectives

- The main technical goals are:
 - Improve in-stream habitat
 - Increase floodplain connections
 - Improve riparian and wetlands functions
 - Design actions to improve natural processes

RECLAMATION *Managing Water in the West*

Stormy And Gray Reaches Project Map Book

Entiat River Subbasin
Chelan County, Washington



July 2014



Prepared by the US Bureau of Reclamation Pacific Northwest Region in partnership with Bonneville Power Administration, Yakama Nation, US Fish and Wildlife Service, Natural Resources Conservation Service, Interfluv Inc., Upper Columbia Salmon Recovery Board

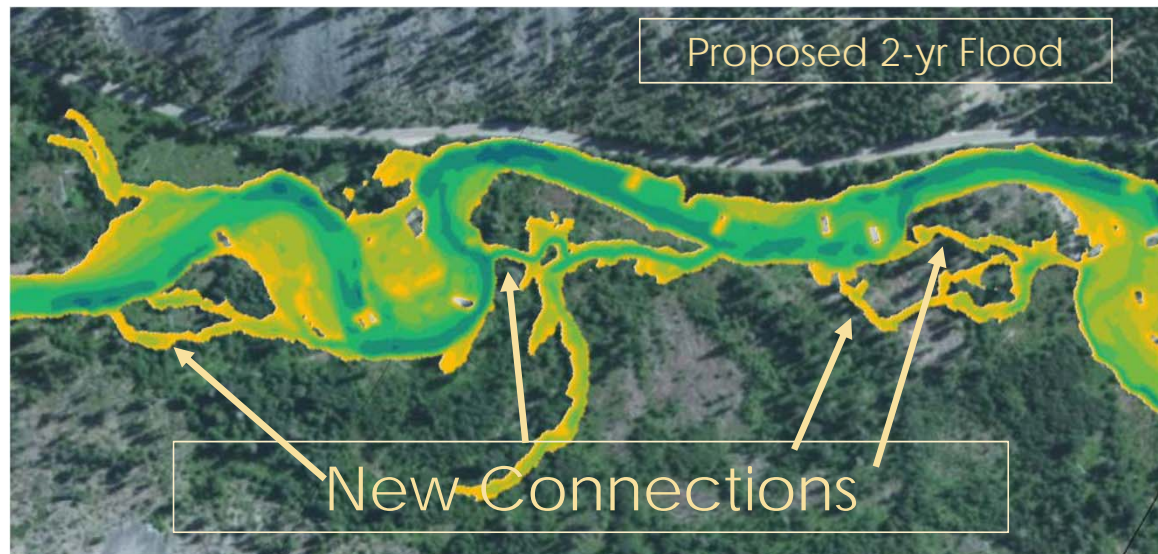
Goals and Objectives

- Improve in-stream habitat



Goals and Objectives

- Improve floodplain connections



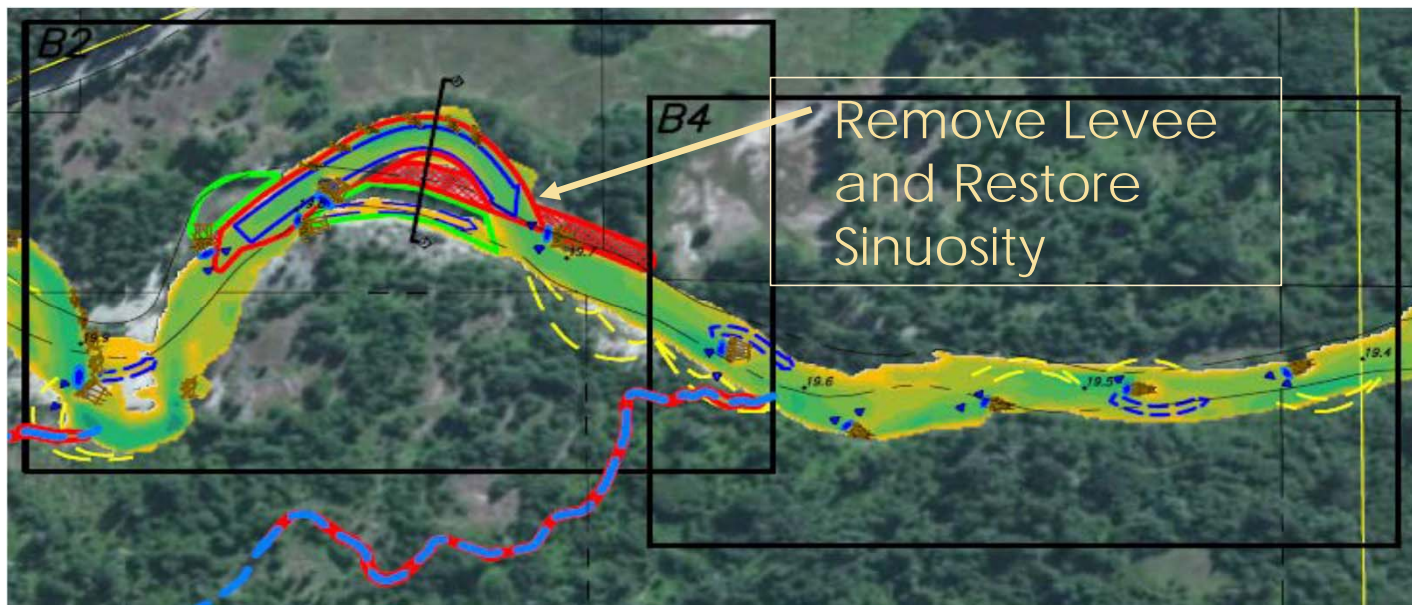
Goals and Objectives

- Improve riparian and wetlands functions



Goals and Objectives

- Design actions to improve natural processes

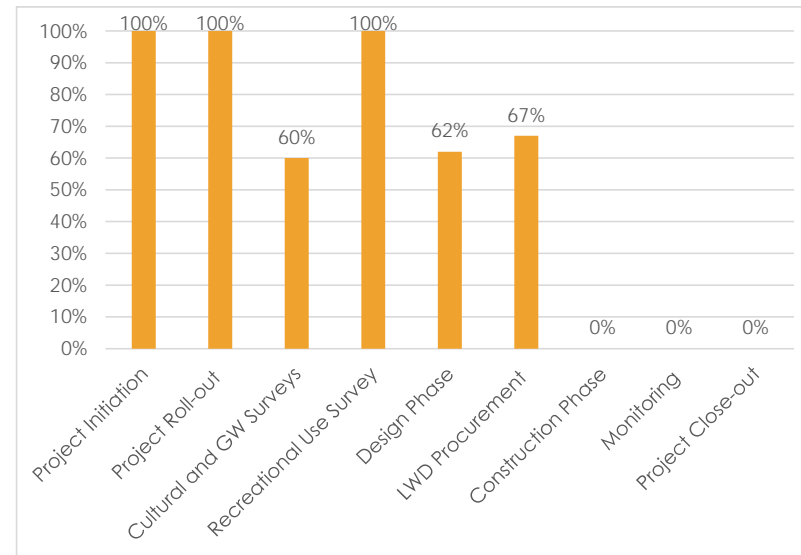


Status Update

PROJECT OVERVIEW

FRI 11/1/13 - FRI 12/29/17

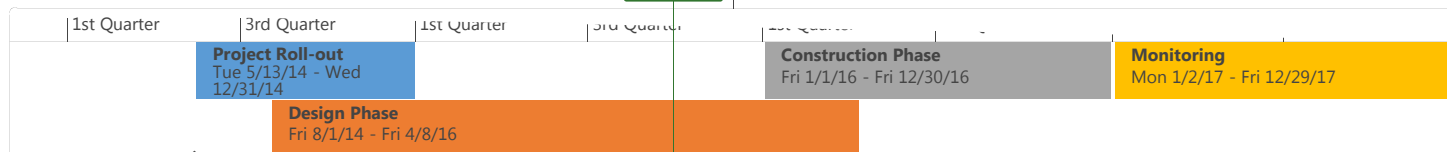
% COMPLETE



2016-2017 ME PMP

Fri 11/1/13 - Fri 12/29/17

Start
Fri 11/1/13



Kick-off Meeting
Tue 5/13/14

Finish
Fri 12/29/17

Status Update

- Just finished initial 60% plans and entering a review phase
- Recently held public meeting (August 26th)
- Have recreational site visit on Oct 23rd to discuss recreational concerns
- Continuing to work with project and local landowners to meet their needs
 - Voluntary process and relies on the permission and support of the community and specific landowners

Timeline/Schedule

- Nov 2015 – 60% plans and begin permitting process
- Dec/Jan 2015/16 – Final plans developed
- Mar 2016 – Phase one final design
- Summer/Fall 2016 – Phase one construction
- Mar 2017 – Phase two final design
- Summer/Fall 2017 – Phase two construction

Questions