

Fuel Break and Forest Resilience Partnership

Cascadia Conservation District
WA Department of Natural Resources
Chelan County PUD

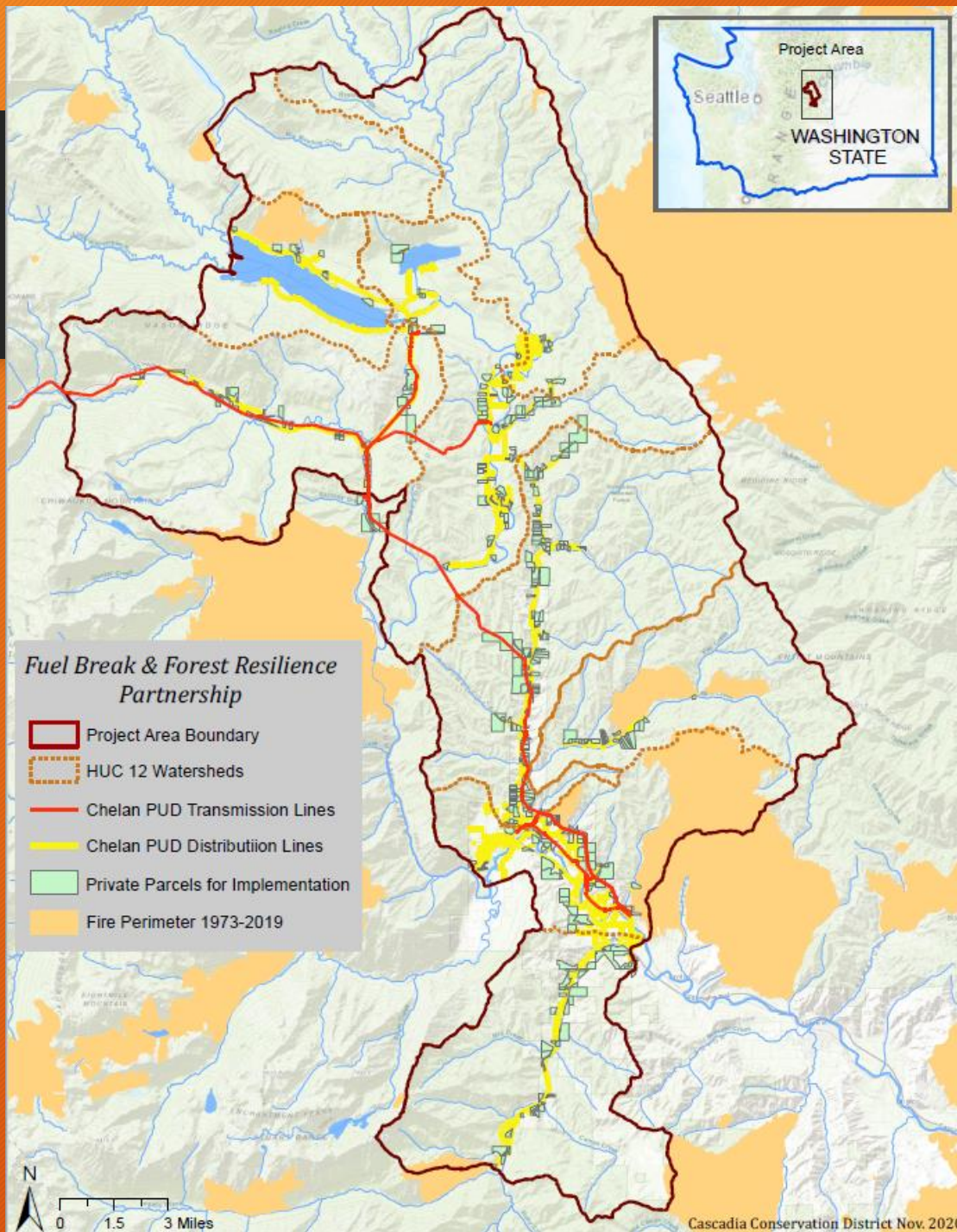


Project Background and Overview

- Previous planning efforts have identified high risk areas to prioritize forest health treatments
- HB 1784 and associated analysis identified locations for fuel breaks and potential control lines
- Chelan PUD undergoing infrastructure hardening and wildland fire mitigation efforts (vegetation management along powerlines)
- Treatment need far exceeds traditional funding sources → requires long term sustained investment sufficient to work with many landowners over several years
- Partners worked together in fall 2020 to develop proposal for NRCS Regional Conservation Partnership Program



Project Summary



- Landscape from lower Peshastin to Lake Wenatchee
- Focus will be working with landowners with 5 or more acres that are adjacent to the 140 miles of PUD powerlines or the Potential Containment Lines identified in the 1784 analysis
- Project aims to get these landowners to work as a community to get multiple landowners to join together for large scale projects and fuel breaks
- Initial site visit will include an intake form to help inform which cost-share programs are most appropriate for the landowner's objectives; ability to use one or most of the DNR, Cascadia, and NRCS cost-share programs
- All participants will get a forest management plan that includes commercial harvest opportunities, NRCS and DNR practices, and utility specific recommendations
- Sliding scale of cost-share eligibility depending on total acres, number of adjacent landowners, and treatment type

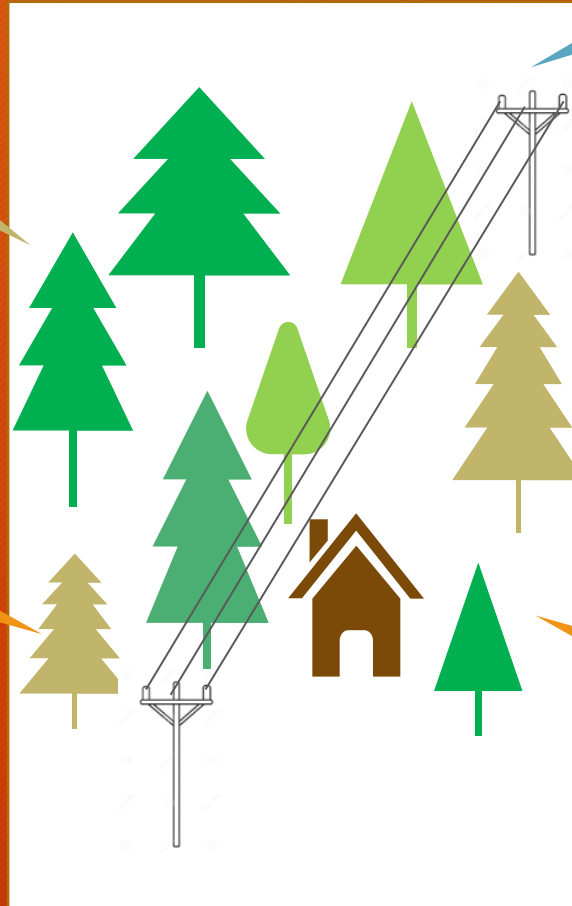
Combining Resources

DNR Landowner Assistance

Understory thinning, pruning, and slash disposal. Limited to trees under 8 inches diameter. Relatively quick turnaround time.

NRCS EQIP & CSP

Large range of eligible practices including fuel breaks. One or more year from planning to implementation. Limited outreach capacity.



PUD Vegetation Management

Tree pruning and removal within 100 ft corridor of power lines. Utility line maintenance planning and hazard tree identification.

Cascadia Cost-share program

Cost-share need exceeds existing resources. Flexibilities with overlapping acreage with other cost-share programs. Successful outreach programs.

TSP Foresters

Write partner approved, streamlined forest management plans and work to combine multiple landowners for community projects that could allow for viable commercial harvest.



Impact

Landowners navigate cost-share programs with individual entities and chose one for their property

Landowners complete a standard intake form to identify all opportunities and receive an integrated forest management plan

Forest landowners choose not to manage their land due to concerns over permitting and regulations

Partners review regulatory issues with owners who then decide to take action to improve forest health

Potential Containment Lines (PCLs) established via fuel breaks, reducing fire risk to communities, critical wildlife habitat and improving wildfire response

Critical infrastructure, homes, firefighters, and residents at high risk from fast-moving, well-fueled fires

Landscape conditions within the range of historic variability

Overstocked, stressed forests prone to insects, disease, and catastrophic wildfire



Draft Project Timeline

Final agreements with NRCS underway

Anticipate outreach to begin this fall

Rolling sign-ups with two deadlines per year

Landowner Outreach / Community Meetings



October

Sign up deadline



December

Conservation planning with applicants -
Initial site visits & intake form



Oct-Feb

Screening and Ranking



February

Contract pre-approval deadline



March

Contractors in place to begin work
Next round of Outreach/Community Meetings



April



Contact Info

- Patrick Haggerty

Forestry Program Manager, Cascadia Conservation District

patrickh@cascadiacd.org

509-436-1601

