

CONSERVATION QUARTERLY

SPRING 2022

This institution is an equal opportunity provider.

LANDOWNER SPOTLIGHT: RIPARIAN RESTORATION ON CHUMSTICK CREEK

Contributed by Colin Sternagel, property owner

We own eight acres within the Chumstick water catchment basin. The land is very diverse in its ecology. From dense and steep Doug fir forest to a riparian zone along the creek and a once grazed semi-agricultural pasture in between. Our land use consists of stewardship efforts to increase diversity, resiliency, habitat, food & products (such a small diameter wood use). On the ground, this looks like forest thinning, native & diverse plantings, soil building, intentional habitat growth and nourishing the water basin through slowing, spreading and sinking water flows on the property.

Chumstick Creek was once abundant with fish and provided lodging to many beavers and animals. Restoration of the land reconnects us to the ways of our ancestors and acknowledges the peoples & the culture that originally inhabited this valley. We see the land as an extension of ourselves; we must learn from it and be a part of the cycles & seasonality of life.

We have participated in Cascadia's chipping & restoration programs. Both programs have helped immensely in getting restoration projects started and providing further support. For landowners wanting to do restoration work there is little incentive out there beyond a personal passion, which requires a big sacrifice in either time or finance.

Seeing a place improve from your own hand and work ripples across all of life. Birds nest in the willow thicket we planted, steelhead and trout wait out the drought in the pool we created. The shade from the aspen and cottonwood, shelter us from the record heat waves. Invasives like reed canary grass retreat more and more each year under the shadows of red osier. It's been 5 years since the initial planting. When we walk through our restored areas, the changes can speak for themselves.



2016 Planting
Photo: Cascadia CD



Plant growth as
of March 2022
Photo: Cascadia CD

Cascadia navigates the permitting process, planning stages, and works with the landowner to pick out the most appropriate plants and proper applications to ensure success, limit loss, and reduce invasives. We would definitely encourage others to participate!

Learn more about Cascadia's programs at cascadiacd.org. Or contact us at (509) 436-1601 or info@cascadiacd.org.



The transition from winter to spring brings new challenges for the growing season: leaky pipelines, inefficient sprinklers, and let's not forget the April snow showers.

Don't go at it alone! Cascadia can assist by developing water management plans and identifying cost-share opportunities for your farm, with up to 75% of project costs reimbursed. Landowners with thoughtful stewardship project ideas are encouraged to contact us.

Some examples are:

- **Irrigation Management** (sprinkler system or micro-irrigation, pipelines, pumps, filters, grassed waterways)
- **Farm Operations** (cover crops, pasture management, pollinator habitat, native vegetation planting)

Visit our website, www.cascadiacd.org, call (509) 436-1601, or email elizabethj@cascadiacd.org for more information.

Hello Spring!

LOCAL
POSTAL CUSTOMER

Non-Profit Org.
US POSTAGE
PAID
PERMIT # 40
Wenatchee, WA
ECRWSS

Cascadia Conservation District
14 N Mission St
Wenatchee, WA 98801

WELCOME ABOARD ALEX



Cascadia is pleased to welcome Alex Harwell to our team as a Resource Specialist II.

Originally from bluebonnet and hurricane-rich Gulf Coast Texas, Alex originally began working seasonally in the Pacific Northwest in 2008.

Jumping around raft and sea kayak guiding, trail building, and teaching, Alex followed her passions and went back to school to graduate in 2015 with a Master's in Environmental Horticulture and Ecological Restoration.

Since then she has been working full time helping to achieve lasting

sustainability goals through the reconnection of people to place through inclusive, innovative and integrated restoration approaches. When not at work you can find Alex wandering Cascadia: collecting seeds, wildcrafting, and deepening her own connection to place.

CULTIVATING A SENSE OF PLACE FOR ALL

Contributed by Nina Aragon, Community Snow Observations & Katie Strahl, Basecamp Cascadia

“Laughing, learning, collaborating, and community building - the indicators of a tremendously successful program.” - Nina Aragon, Community Snow Observations

This February, Basecamp Cascadia, Team Naturaleza, She Colors Nature and Community Snow Observations joined forces to put on Winter in the Wild Community Day - with financial support from the Community Foundation of North Central Washington and pizza from Dan's Food Market in Leavenworth.



Individually these organizations share a focus in connecting North Central Washington community members to the outdoors, but collectively they united to create a more diverse and inclusive winter outdoor community.

The purpose of this event was to “cultivate a sense of place for all families in the outdoor community by providing support and a space that encourages winter connection through community building, recreation and snow science” -Katie Strahl, Basecamp Cascadia

The all-female leadership team included Chelsea Murphy with She Colors Nature, Elisa Lopez with Team Naturaleza, Nina Aragon with Community Snow Observations, and Katie Strahl and Chelsea Behymer with Basecamp Cascadia, who began to percolate ideas last fall of how they could truly connect more community members to winter through snow science and recreation. They knew they wanted to intentionally reflect the community they lived and served in.

Forty individuals gathered on a stormy Saturday in February. Basecamp Cascadia resides on the crest of the rainshadow and as clouds moved in and out that morning the excitement of the arriving community members made the setting grow brighter, until by the end of the day, bluebird skies emerged and the sun burst through the waning gray just in time for Dan's pizza and sledding. Participants learned about the local ecology on a snowshoe trek, observed snow crystals up close, and learned how to submit snowpack observations using metric probes and their phone with the Community Snow Observations app.

Experiences like Winter in the Wild 2022 make up the lifeblood that bonds and nourishes our community - much like the seasonal snowpack is the lifeblood of our home ecosystem and agricultural economy.

Want to get involved? Contact us at basecampcascadia.org.

WORKING TO RESTORE YOUR WATERSHED?
 Salmon-Safe certification now available through Cascadia Conservation District

Field Tour Sign Up: Growing Your Farm to Make Conservation Profitable

Explore the possibilities of enhancing your farm with conservation practices to potentially reduce management costs. We will tour several locations where farm managers have applied best management practices to increase crop production and health without breaking the bank. This field day will begin at Diamondback Acres in Chelan, WA, a Salmon Safe certified orchard since 2019. Then, we will travel to the Hard Row to Hoe vineyard and tasting room in Manson, WA, the first Salmon Safe certified entity in Chelan County and LIVE certified sustainable wine.

The tour will cover Salmon Safe certification standards, agency programs available to implement practices, pollinator integration, and fire resiliency for farms. Q&A will occur throughout the tour.

Speakers include staff members from Cascadia CD, Foster Creek CD, Salmon Safe, and USDA-Natural Resources Conservation Service (NRCS). The WSU Extension's Nottingham Tree Fruit Entomology lab will provide a special talk about pollinator habitat.

Thursday, May 26th, 2-5 pm

- 1 pesticide credit
- Snacks and beverages provided.
- Optional wine tasting after the event (\$15 fee).



Space limited, please RSVP with the QR code below:



Or visit, www.cascadiacd.org



2022 HABITAT ENHANCEMENT PROJECT: AT SILVER FALLS, ENTIAT

Contributed by Chris Clemmons, Yakama Nation Fisheries

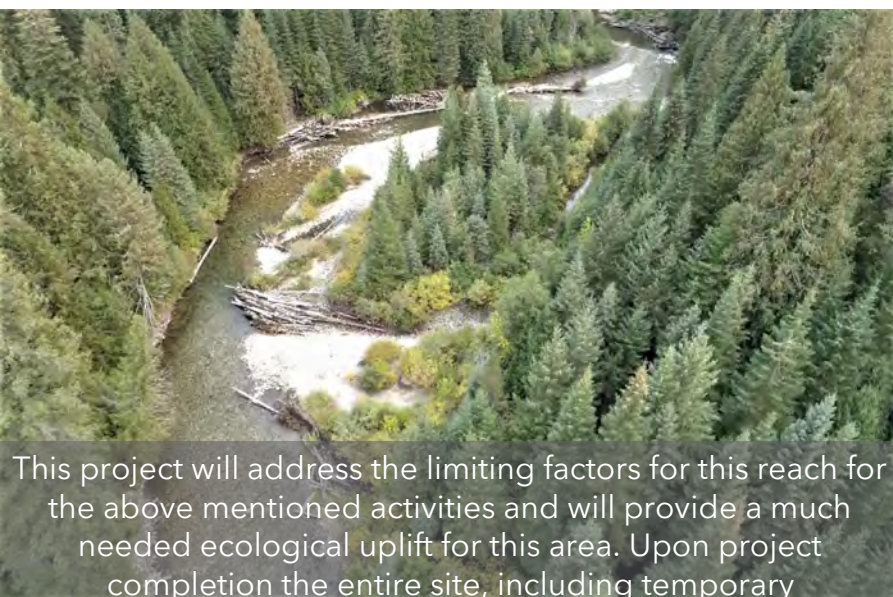
The Yakama Nation Fisheries will be implementing a large scale habitat restoration project this summer in and around the Silver Falls Campground, Entiat River Rd, WA.

The project will involve habitat restoration activities within the two campground loops on both sides of the river. During the work the Silver Falls Campground will be closed for safety and compliance reasons that will span from July 11th – Aug. 5th, 2022 at this time.

The project will involve land-based equipment as well as helicopter placement of approximately 250 pieces of large woody material.

The project itself consists of restoring and/or enhancing 5 relic side-channels by creating more pool, cover and complexity as well as peripheral and transitional habitat opportunities for ESA-listed adult and juvenile Endangered Spring Chinook salmon and Threatened steelhead trout.

In-water activities will take place during the in-water work window of July 16th-31st and it is our anticipation that all activities will be wrapped up by Aug. 5-7th, 2022. Since this project will take place on both sides of the river a temporary crossing will be installed at the upper end of the project. Existing campground loops will be utilized to mobilize equipment as well as an ADA accessible trail that will be used to construct major portions of the project on roadside of the river.



This project will address the limiting factors for this reach for the above mentioned activities and will provide a much needed ecological uplift for this area. Upon project completion the entire site, including temporary access routes, staging areas and areas of restoration actions will be planted with native riparian vegetation.

This project is a partnership between the Yakama Nation Fisheries (YNF), Upper Columbia Habitat Restoration Project, Wenatchee Office and the United States Forest Service, Entiat District.

Any project related questions or general salmon restoration questions for this project should be directed to the YNF project manager Chris Clemmons who can be reached at (509)-881-5746 or clec@yakamafish-nsn.gov.

THE MIDDLE ENTIAT GREY PROJECTS: AN UPDATE

Contributed by Mark Ingman, Cascadia Conservation District

The Middle Entiat Habitat Projects are a series of six projects in the Gray and Stormy reaches with the goal of helping improve habitat for endangered salmon and steelhead in the Entiat River.

The project area covers about four miles of the Entiat River split into two reaches, The Gray Reach (River Mile (RM) 16.1 to 17.9) and the Stormy Reach (RM 18.1 to 20.1). These projects were constructed from 2019 to 2020 and were funded by the US Bureau of Reclamation Yakama Nation Fisheries (BPA Accord Funds) and the Rock Island HCP Tributary Committee for the design,

construction, revegetation, and monitoring. Project sponsors include Cascadia Conservation District, Chelan County Natural Resources Department, Chelan-Douglas Land Trust, and the Yakima Nation Fisheries.

The post project monitoring of these sites is ongoing, with a new research phase led by the US Forest Service & Cramer Fish Sciences. This study will provide information of how salmon and steelhead are utilizing sites from the past project implementation and how the river & habitat conditions have changed.

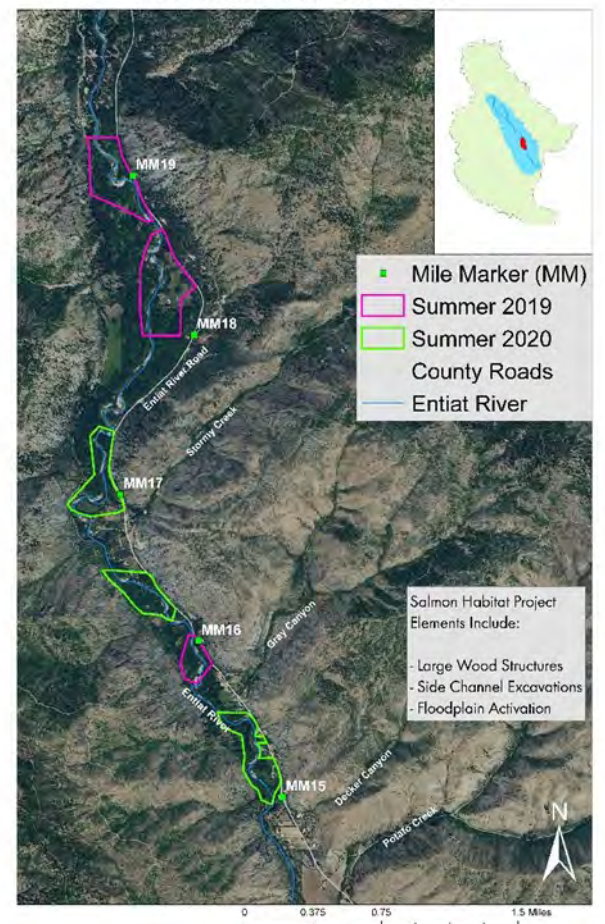
Over the course of this spring and summer, you may notice researchers snorkeling in and around the project sites, in particular around the engineered log jams and side channels (shown in map above). Usually the research process requires several years of data collection to produce scientific findings and a final report. Once completed, the results will be shared through the Entiat Watershed Planning Unit (EWPU).

The EWPU is mostly comprised of Entiat residents and habitat restoration professionals. However, new members of public are welcomed to participate in EWPU meetings (contact phone number is below). If you would you like to be more involved in Entiat watershed and community planning meetings please contact Mark Ingman at the Cascadia CD office at (509) 436-1601.



A completed engineered log jam in the Middle Entiat Grey Area E project site. These structures provide direct habitat and cover for salmon & steelhead while also driving changes to the flow and planform of the river that in turn provide additional salmon habitat benefits.

MIDDLE ENTIAT PROJECTS



A LANDOWNERS GUIDE TO WATER RIGHTS: UNDERSTANDING & USING A VALUABLE RESOURCE

**Contributed by Lisa Pelly, Trout Unlimited
Washington Water Project**

*Are you interested in learning more about
your water rights or looking at a piece of
property with water rights?*

Trout Unlimited's handbook, *A Landowners Guide to Water Rights* is available to assist landowners or potential future landowners with gaining a better understanding of Washington water law and water rights.



The handbook discusses what it means to have water rights, options for changing and transferring water rights, details on avoiding relinquishment, and also provides various options and opportunities that are available to help landowners voluntarily conserve and protect Washington's water resources. This guide informs readers of opportunities and organizations that can assist them with protecting our state's precious and limited water resources.

This handbook is intended to demystify water rights and provide the basic tools for understanding what a water right provides and what it doesn't.

This is important if you own land with water rights, want to buy or sell land with water rights, or want to transfer water rights from one piece of property to another.

The handbook is available online at yakimabasinwatermarketing.org/tulog or hard copies are available the Trout Unlimited office at 103 Palouse, Suite 14 in Wenatchee or at the Cascadia Conservation District office at 14 N Mission Street, Wenatchee.

IMPROVED HABITAT: THROUGH BEAVER POWERED RESTORATION

**Contributed by Kodi Jo Jaspers, Beaver-
Powered Restoration Program Manager**

*What do you get when you mix orchardists,
a fish hatchery, and eager beavers?
A successful 2021 beaver season of course!*

The Wenatchee-Entiat Beaver project is a partnership between Trout Unlimited and the United States Fish and Wildlife Service (USFWS) that started in 2018. In October 2021, the beaver project wrapped up one of their most successful seasons since the inception, with 16 beavers trapped and relocated.

Last season the project worked closely with several orchardists along Mission Creek who were losing hundreds of valuable fruit trees nightly to beavers. The crew assessed the situation with the landowners and ultimately ended up live trapping the beavers.

After capture, the beavers spent time at the Leavenworth National Fish Hatchery to ensure health, safety and that all members of the family unit were captured prior to release. After a week at the hatchery, the beaver family found themselves in the bed of a truck on a bumpy Forest Service Road headed for their new home on public land.

In 2021, beavers were released at six different locations and by the time November rolled around four of those locations were still occupied by the released beavers, that's a 66% success rate!

One beaver family built 2 dams within 2 months, one being over 13 feet long and 3 feet tall. A successful beaver season has led to improved habitat for the wildlife, salmon and the community.

As activity in the orchards start back up this spring, so does the beaver project. Come May the Wenatchee-Entiat Beaver Project will be available to help landowners in Chelan or Douglas counties with any beaver related questions, big or small. Please reach out and help us make the 2022 season even better than the last! Contact kodijo.jaspers@tu.org.



FISH FACTORS MINI SERIES: ADULT PRE-SPAWN HOLDING PERIOD

Contributed by **The Upper Columbia
Salmon Recovery Board**



Photo: Tiffani Linbo, NOAA fisheries

The Upper Columbia Salmon Recovery Board launched the Fish Factors Mini-Series in 2022. Each quarter the series will spotlight important stories on factors impacting Upper Columbia salmon and trout. The first “Fish Factor” examined some of the evolutionary characteristics salmon have developed in order to survive long, homeward migrations to their birth locations. This quarter we explore the adaptations and challenges of the pre-spawn life stage, the time after salmon have arrived at their natal streams but prior to reproducing.

More about the Fish Factor Mini Series here: <https://www.ucsr.org/fish-factors-mini-series-adult-freshwater-migration/>

Once Pacific salmon have completed their homeward migration to spawning grounds, many species wait for a period of weeks to months for water temperatures to cool before they commence spawning in the fall. Sockeye salmon typically spend this waiting period in lakes, whereas spring Chinook salmon seek cover from predators in deep pools and under logs and undercut banks in streams near their spawning areas. Salmon do not feed during this holding period, relying entirely on stored energy accumulated in the ocean.

During this holding period, salmon are at risk of predation and susceptible to stress from high water temperatures and other water quality impairments. Recurrent die-offs of adult coho salmon in the Seattle area have been linked to chemicals found in automobile tires that get deposited onto roadways and subsequently drain into streams during storm runoff events.

In other areas, sockeye and spring Chinook salmon pre-spawn mortality has been associated with high water temperatures, which may increase stress and susceptibility to pathogens, or even lead to direct mortality if temperatures get too high. Thus, cold, clean water is imperative for adult salmon during this critical period between migration and spawning. Actions that can help ensure favorable conditions include maintaining healthy riparian conditions to provide shade, filtering urban runoff, and improving connectivity between streams and adjacent floodplains to reduce stream warming.

See additional pre-spawn mortality data here: <https://bit.ly/3L1646z>

20TH ANNUAL LEAVENWORTH SPRING BIRD FEST

Contributed by **Randee Zerger,
Wenatchee River Institute**

Join the **Wenatchee River Institute (WRI)** and **NCW Audubon Society** for the 20th annual **Leavenworth Spring Bird Fest** held May 19th-22nd, 2022!

This year marks 20 years of celebrating the connections between people, birds, and the natural world. Come celebrate with us and discover the natural beauty and wonders of North Central Washington as we welcome the return of migratory birds.

Enjoy the excitement by joining in on a birding field trip, workshop, event, or activity! Bird Fest is back to fully in-person programs with some virtual and hybrid options.


This is a family-friendly festival open to all experience levels. There will be beginner birding activities happening the week leading up to and during Bird Fest as well as several bilingual events. All of this is happening in beautiful Leavenworth and throughout the Wenatchee Valley. Registration is currently open!

We also welcome the return of Family Day on Saturday, May 21st from 10am-2pm at WRI. It's an opportunity to learn about local organizations and businesses, take part in art and nature activities, browse and purchase local art, and try locally made food.

Keep your eye out for the Bird Fest poster featuring the Bird Fest Youth Art Contest winner – Junior, a 4th grade student from Morgen Owings Elementary in Chelan. See below.



We thank our partners, sponsors, and volunteers for helping Bird Fest soar! For 2022, field trip participants will be required to submit proof of COVID-19 vaccination. All current information and details can be found at: www.WenatcheeRiverInstitute.org.

 **Chelan County
Clean Water
Campaign**
a community for clean water & healthy habitat

**PHOTO
CONTEST**

Open May 1 - Oct 1.
cascadiacd.org for details & to submit your photo(s)!

HABITAT RESTORATION PARTNERSHIP EFFORT IN ENTIAT

Contributed by Jen Herdmann, Cascade Fisheries

The snow is finally starting to recede in the Entiat and Wenatchee River drainages, marking an exciting time of year when we can leave our computers, gear up, and get out to explore habitat restoration opportunities with private landowners.

Recently, staff from Cascadia Conservation District and Cascade Fisheries connected with landowners of a recently purchased and significant property along a fish-bearing tributary of the Entiat River.

It was a spectacular day and all were thrilled to collaborate face to face in the field. Between the long winter and COVID-19 isolation, there was a special feeling of jubilation to gather in person, especially to be meeting with landowners who wanted to incorporate habitat restoration into their long-term planning.



Often, we initiate contact and humbly ask permission to plant trees, replace culverts and enhance habitat. In this case, it was the landowners who initiated this visit. Staff identified the attributes of this small watershed that were naturally functioning and areas that could use a little help.

These visits are a combination of brainstorming and relationship building where all parties share their vision and goals for a given property. Stay tuned for an update as the visioning process comes to fruition!

For more information about Cascade Fisheries projects and programs visit <http://www.ccfeg.org/> or call (509) 888-7268.

For more information about Cascadia Conservation District projects and programs visit www.cascadiacd.org or contact (509) 436-1601.

HELPING PEOPLE HELP FISH THROUGH EDUCATION



Contributed by Jen Herdmann, Cascade Fisheries

Since 2015, Cascade Fisheries has provided its Schools for Salmon (SFS) program throughout NCW that help all ages learn about, celebrate, and raise salmon in classrooms.



Supported by federal, state, and local education grant funding, SFS has expanded significantly this year in Chelan and Douglas counties. Participants from Cashmere Public Library and Wenatchee and Eastmont School Districts received a total of 2,800 fish from the Yakama Nation Fisheries coho reintroduction program – a program that has re-established the lost, naturally spawning populations of coho salmon in the Wenatchee and Methow Rivers.

This spring, over 870 students will participate in watershed stewardship action and use their knowledge gained during the school year to identify the best possible habitat to release their salmon into the Wenatchee River.

If you are interested in bringing fish fun into your classroom, contact Jen@ccfeg.org or reach out on social media (@ccfeg). Big thank you to our funders: Community Foundation of NCW, Icicle Fund, Upper Columbia Salmon Recovery Board, Office of the Superintendent of Public Instruction, and The National Oceanic and Atmospheric Administration.

PUBLIC EVENT: Join us June 25th at the Cashmere Public Library for a community salmon release! Info at: www.ccfeg.org/communityevents

SOIL TESTING PROGRAM

Good grass, healthy pasture and abundant crops start with healthy soil.

Contact Elizabeth Jackson at 509-436-1601 or elizabethj@cascadiacd.org for a free soil test.

BOODRY ST CLEAN UP AND WILDFIRE PREPARATION: A SUCCESSFUL COLLABORATIVE EFFORT

Contributed by **Laura Rivera, Community for the Advancement of Family Education (CAFÉ)**



The community's biggest concern was loss of homes due to wildfires. We wanted to help them dispose of anything causing them to stress about the safety of their homes.
-Laura Rivera, CAFÉ

Last year, Wenatchee CAFÉ volunteers spent much of the spring meeting with residents in the Boodry Street Neighborhood and learning about the community's desire to clean-up the area and reduce wildfire risk. With support from Wenatchee CAFÉ, Chelan County Public Works, Chelan Fire District 1 and Cascadia CD, community leaders organized and started taking action with their neighbors. Audelia Garcia stepped up to become a community captain for the Wildfire Ready Neighbors program, which helped many residents sign-up for home risk assessments and receive recommendations on reducing wildfire risk to their home.

Boodry Street and partners accomplished a lot last year and are continuing the work this spring. Here are a few highlights;

- Ten 30-yard dumpsters that were filled with of 75 tons of garbage and hauled to the Greater Wenatchee Landfill.
- Four 30-yard dumpsters that were filled with 39 tons of metal and sent to Wenatchee Valley Salvage for recycling.
- 3000 tires were hauled out to be used as fuels in incinerators.

It was especially rewarding to see the neighborhood residents show their appreciation by coming out, bringing out their garbage and monitoring the tire pile. The entire clean-up effort spawns a renewed outlook of keeping a healthy environment.

-Brenda Blanchfield, Chelan County Public Works: Solid Waste



For Earth Day, Cascadia Conservation District and CAFÉ helped remove inorganic materials polluting the stream that flows through the Boodry Community. The neighbors allowed us to walk through their properties as we cleaned the stream.
In addition, Fire District 1 and Cascadia brought a wood chipper to the community. A great job was done at reducing fuels around the neighborhood.

FOREST HEALTH CAREER CONNECTED LEARNING IN LEAVENWORTH

Contributed by **Barbara Carrillo, Chumstick Wildfire Stewardship Coalition (CWSC)**

CWSC Director Barbara Carrillo and Steering Committee member Lloyd McGee enjoyed the opportunity of working with the Natural Resource students at Cascade High School recently to enhance their understanding of forest health.



Lloyd McGee (left), CWSC Steering Committee member and Eric Bard (middle), lead a discussion on forest health with students at Cascade High School in Leavenworth.

The students, led by teacher Eric Bard and CWSC, participated in a forest health assessment behind Cascade High School on Rattlesnake Hill.

Students learned methods to assess the health of the forest and discussed how it should be managed for health and fire. CWSC and the class climbed the hill and learned about the health of the forest in a thicker and unmaintained area and measured conditions in the forest such as density of trees, fuel loads and tree circumference. Tree diseases such as Dwarf Mistletoe, root rot, needle cast and beetle infestation were identified and we discussed defenses used by healthy trees such as pushing beetles back out of their sap to prevent infestation.

CWSC staff also led the students to a healthy section of the forest where the elements of a healthy forest were reviewed. The students learned to compare the spacing of trees in a "managed" section where trees were naturally spaced, limbed up and exposed to sunlight. We wrapped up a great hike by discussing ideas for long term stewardship of this forest which could include thinning, limbing, prescribed burning, and fuel breaks.

The day ended with the students asking questions about careers in natural resource management & forestry and a variety of careers were reviewed in depth with students.

If you would like to volunteer for upcoming education days in the forest, please contact the CWSC at info@chumstickcoalition.org.

JOIN WILDFIRE READY NEIGHBORS Reducing wildfire risk starts with our community.

That's why we partnered with the Washington State Department of Natural Resources, Cascadia Conservation District, Wenatchee CAFÉ, Lake Wenatchee Fire and Rescue, and Chelan County Fire Districts 1, 3, 5, 7, and 8 to help everyone take action to get wildfire ready. Every neighbor in Chelan County who signs up at WildfireReady.com by May 29 will receive a FREE step-by-step Wildfire Ready Plan and get entered to win a \$300 Stan's Merry Mart gift card.



Join your neighbors in reducing wildfire risk at WildfireReady.com.



KIDS CORNER: WHAT IS OUTSIDE? SCAVENGER HUNT

Spring is a great time to get outside and explore!


Exploring nature can happen by checking out a single plant pushing its way up through a concrete sidewalk, by watching the animals entering a garden, by smelling a flower, by examining the surroundings alongside an urban nature trail or by listening to the natural sounds during a hike into a wilderness area. Use the "What is Outside? Scavenger Hunt" below as you explore the outdoors this spring and summer.

What is Outside?


- Animal poop with berries.
- An animal that is on a plant.**
- A bird constantly flapping its wings.
- Part of a plant that feels rough.**
- A bird that is singing.
- An insect that is jumping.**
- An insect that is making a noise.
- A salmon in a river or creek.**
- Something that eats salmon.
- Leaves that feel soft.**
- Leaves shorter than your finger.
- Leaves bigger than your hand.**
- Tree bark that smells like vanilla.
- An animal track with claws.**
- An animal trail.
- Humans taking care of nature.**




Bear poop




Something that smells bad.




The tallest tree




A red mushroom




Deer poop



The sound of a tree.



Coyote poop



CASCADIA
CONSERVATION DISTRICT

14 N Mission St Wenatchee, WA 98801
(509) 436 -1601 • www.cascadiacd.org

UPCOMING MEETINGS & EVENTS

Cascadia Conservation District Board Meetings

May 20, June 17, July 15. Watch our website or call (509) 436-1601 for updates. Call-in or video conference options are available.

***Strategic planning in progress. Watch our website for updates & opportunities to participate.**

Entiat Watershed Planning Unit Meeting

June 1, 4-6 pm, Entiat Fire Station, 2200 Entiat Way
Call/Zoom participation available. Call (509) 436-1601 for details.

Entiat River Appreciation Event

July 30, 10 am - 2 pm, details TBD.

Watch for info at cascadiacd.org and on our Facebook page.

Habitat Restoration Projects Tour

May 20, 9 am - 1 pm, Join Cascadia CD and Cascade Fisheries tour a diverse set of local restoration projects including riparian, floodplain, forest, and aquatic habitats currently at various phases of implementation. **Details & registration at <https://wenatcheeriverinstitute.org/bird-fest/>**

Basecamp Cascadia's Paddle into the Wild

June 3-6, Four-day immersive experience to empower you to be a stronger packraft paddler and ignite your thirst for river adventure. For more information about this and other programs at: www.basecampcascadia.org/paddle-into-the-wild

Chelan-Douglas Land Trust Volunteer Work

Join CDLT for various projects, including trail maintenance and native habitat restoration.
<https://www.cdlandtrust.org/outings-events>

Chelan PUD: The Power Hour

Season Two: Monthly at noon

Live Q&A with energy efficiency experts to answer your questions about surviving winter, energy efficiency, rebates, lowering your energy bills, and more! **Livestreaming on Facebook and YouTube: [youtube.com/chelanpud/live](https://www.youtube.com/chelanpud/live)**

Chumstick Wildfire Stewardship Coalition

- **Woody Debris Recycling Days with CWSC and CCFD3**
May 21-22, 2022, 10-2 each day at Chelan County Public Works Day Pit on the corner of E. Leavenworth Road and Icicle Road.
- **Annual Town Hall Meeting with Community & Partners**
May 31, 2022, 1-3 pm at CCFD3, 228 Chumstick Highway.
Attend for exciting updates from CWSC and Partners
For more info contact **Barbara Carrillo: (509) 860-0252 or info@chumstickcoalition.org**

Upper Columbia Salmon Recovery Board

- **"Below the Rapids of the Upper Columbia" Class.** May 10 from 7:00-8:30 pm at Pybus Market in Wenatchee. Learn about the incredible amount of restoration work taking place and how the public can stay informed and involved!
- **World Fish Migration UCSRB Film Screening.** May 17 @ 3:00 pm - 4:00 pm virtually at <https://meet.goto.com/993464973> or by phone at (872) 240-3311 Access Code: 993-464-973.

Wenatchee River Institute

- Seasonal Nature Walks - Throughout spring & summer Noxious Weed ID Training - May 13th from 10-11am
 - eBird Surveys at WRI - May 18, June 15, & July 13
 - Intro to Ornithology Class - May 28th & May 29th @ WRI
 - Intro to Native Plants Walk - June 18 10am-12pm @ WRI
 - Traditional Basket Weaving - July 9th & July 10th @ WRI
- For more information, visit <https://wenatcheeriverinstitute.org/programs@wenatcheeriverinstitute.org>, or (509) 548-0181.**

World Fish Migration Day

Join Cascadia and partners May 21 at Wenatchee River Institute in Leavenworth. Details here: www.worldfishmigrationday.com/events/



CASCADIA
CONSERVATION DISTRICT

14 N Mission St Wenatchee, WA 98801
(509) 436 -1601 • www.cascadiacd.org

Staff Members

Mark Amara, *Archaeologist*
Kirk Beckendorf, *Environmental Educator*
Kathleen Deason, *Administrative Assistant*
Patrick Haggerty, *Forestry Program Manager*
Valerie Hampton, *Financial Coordinator*
Alex Harwell, *Resource Specialist II*
Joe Hill, *Forest & Community Resilience*
Mark Ingman, *Resource Specialist II*
Elizabeth Jackson, *Resource Specialist II*
Kim Lancaster, *Archaeologist*
Amanda Newell, *Education & Outreach*
Nada Wentz, *Office Assistant*
Ryan Williams, *Executive Director*

Board of Supervisors

Junell Wentz, *Chair*
Dillon Miller, *Vice Chair*
Amy Bridges, *Auditor*
Jim Bartelme, *Member*
Kurt Hosman, *Member*
Josh Koempel, *Associate*
Larry Cordes, *Associate*

The Conservation Quarterly is published on a quarterly basis by Cascadia Conservation District and reaches over 38,000 households in Chelan County.

This newsletter is funded in part by grants from the Washington State Conservation Commission and other public and private granting entities.

Please Remember to Recycle

