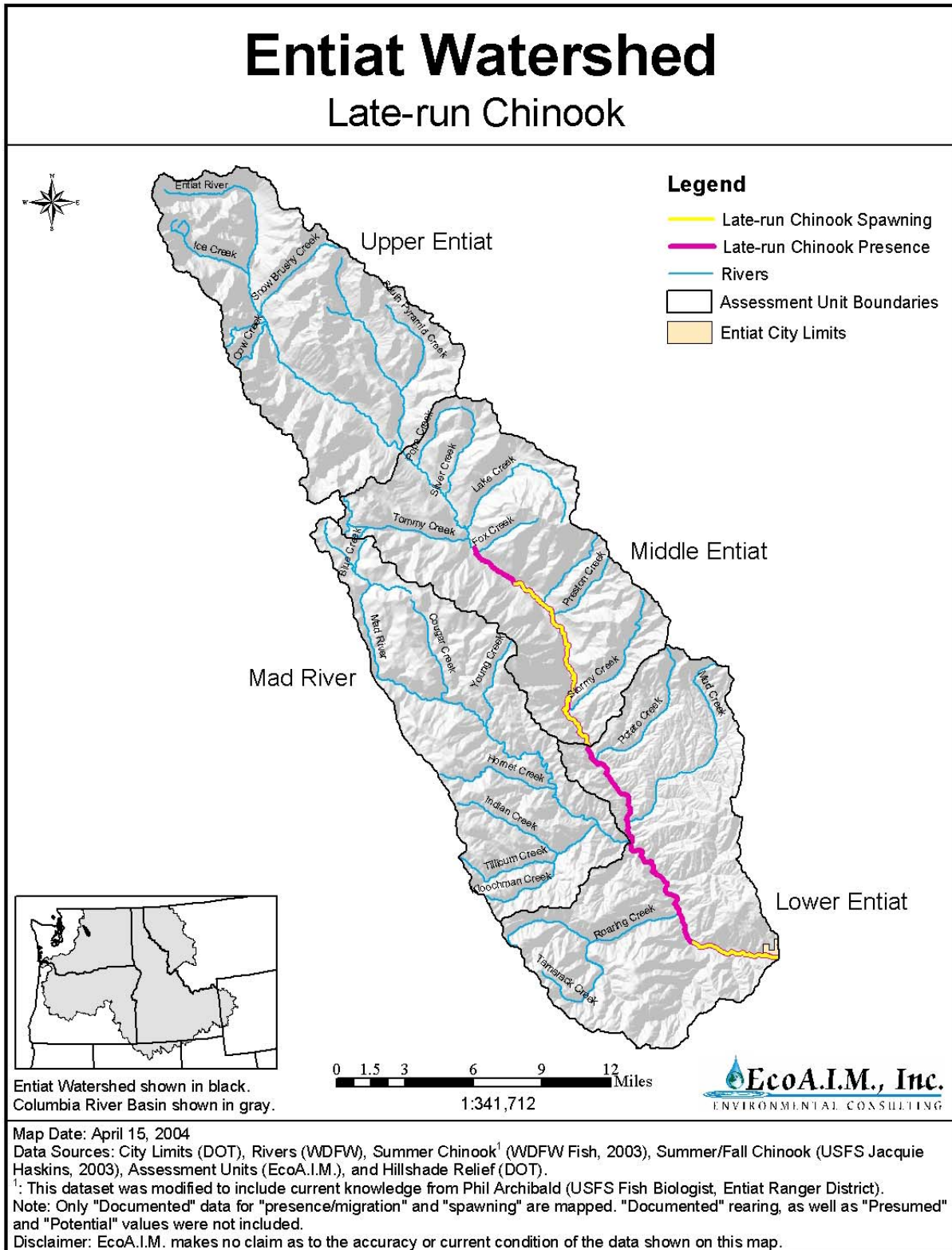


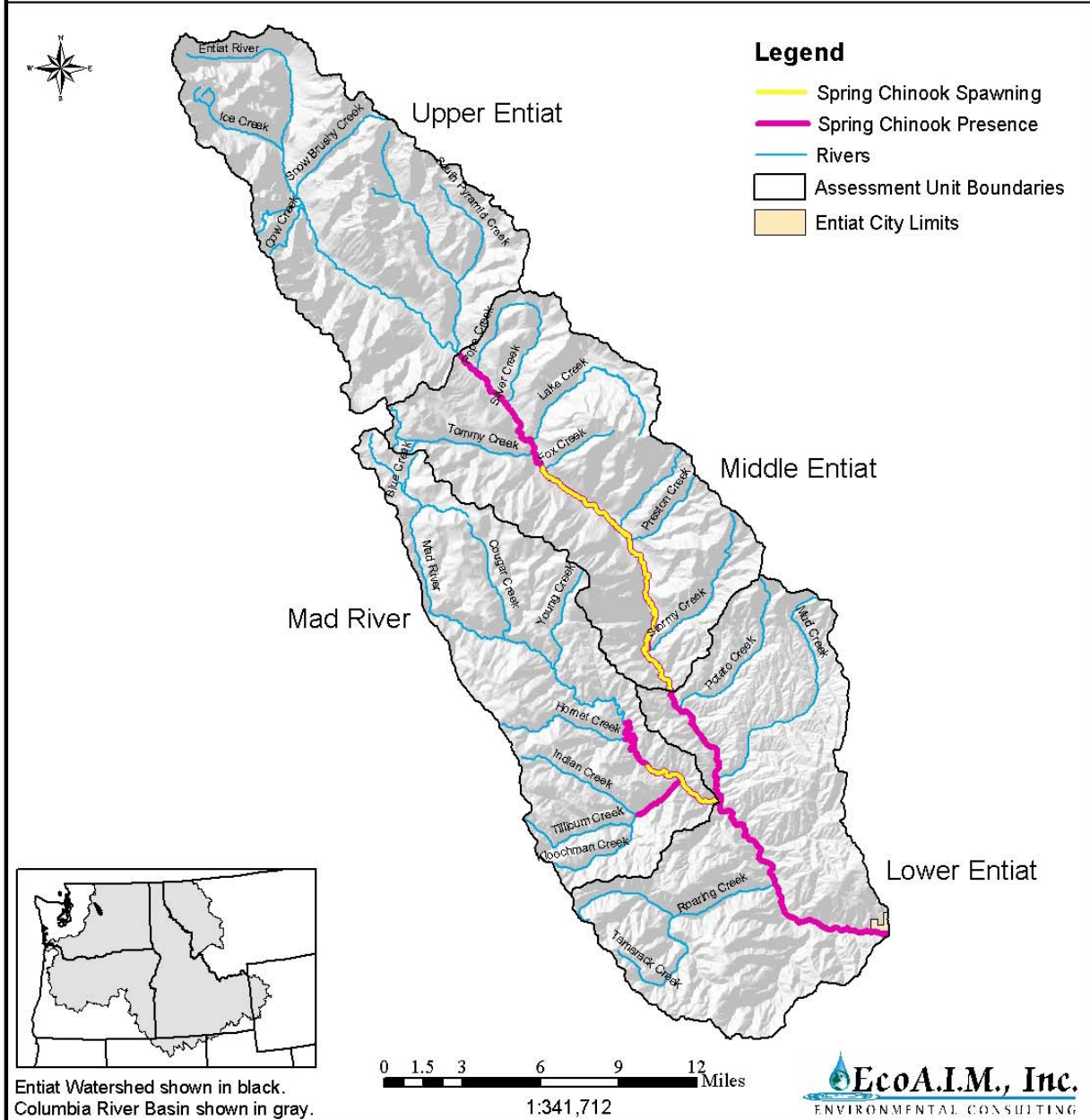
**APPENDIX N.**

**Note:** Fish distribution maps taken from unpublished draft Entiat subbasin plan, May 2004, prepared by Normandeau Associates and Laura Berg Consulting for the Yakama Nation and Chelan County. Used with permission from the Yakama Nation.



# Entiat Watershed

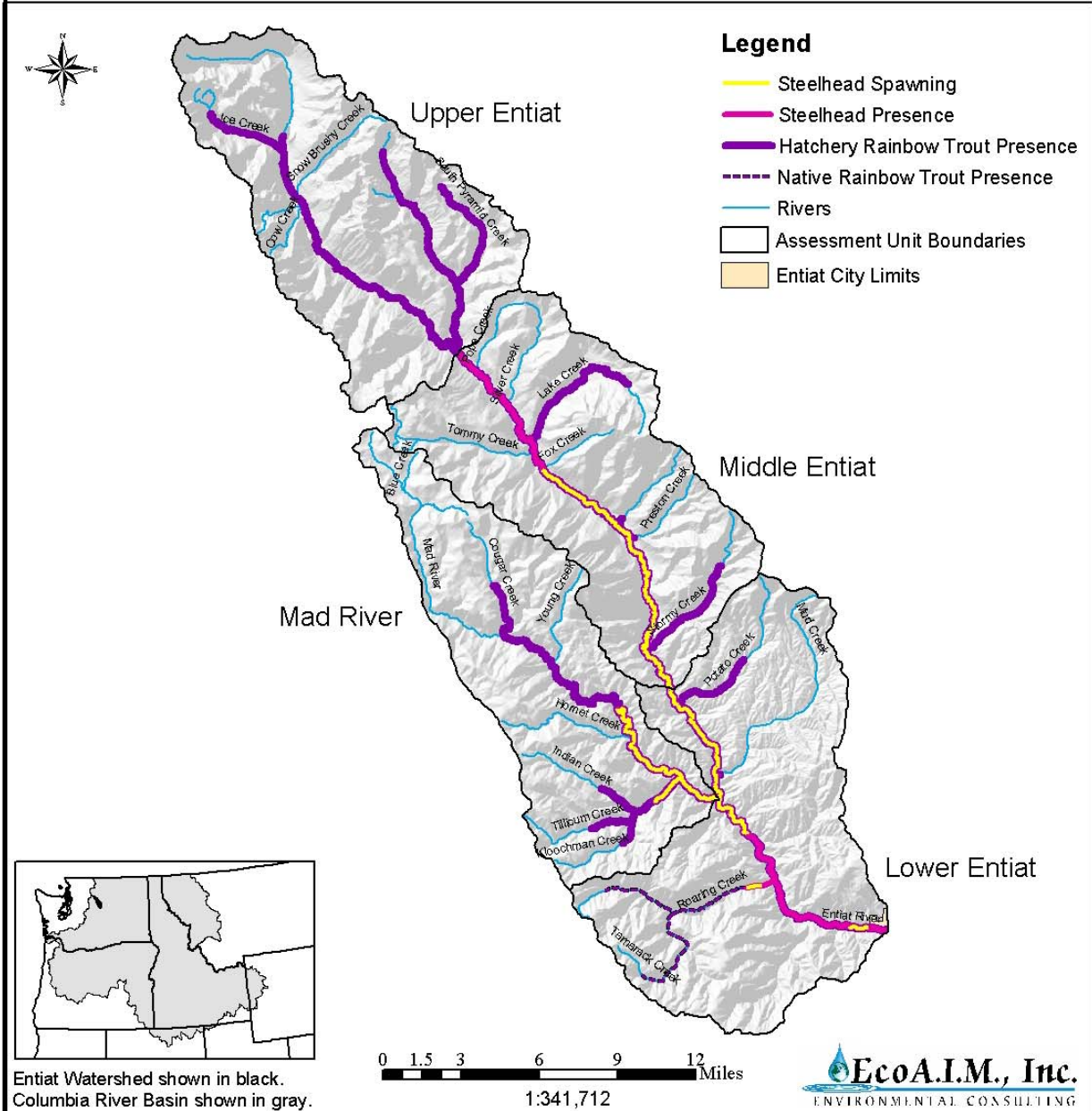
## Spring Chinook



Map Date: April 15, 2004  
 Data Sources: City Limits (DOT), Rivers (WDFW), Spring Chinook<sup>1</sup> (WDFW Fish, 2003), Spring Chinook (USFS Jacquie Haskins, 2003), Assessment Units (EcoA.I.M.), and Hillshade Relief (DOT).  
<sup>1</sup>: This dataset was modified to include current knowledge from Phil Archibald (USFS Fish Biologist, Entiat Ranger District).  
 Note: Only "Documented" data for "presence/migration" and "spawning" are mapped. "Documented" rearing, as well as "Presumed" and "Potential" values were not included.  
 Disclaimer: EcoA.I.M. makes no claim as to the accuracy or current condition of the data shown on this map.

# Entiat Watershed

## Draft Steelhead and Rainbow Trout



Map Date: May 5, 2004

Data Sources: City Limits (DOT), Rivers (DOE), Steelhead<sup>1</sup> (WDFW Fish, 2003), Rainbow Trout<sup>1</sup> (WDFW Resident Fish, 1999), Steelhead and Rainbow Trout<sup>1</sup> (USFS Jacquie Haskins, 2003), Assessment Units (EcoA.I.M.), and Hillshade Relief (DOT).

<sup>1</sup>: These datasets were modified to include current knowledge from Phil Archibald (USFS Fish Biologist, Entiat Ranger District).

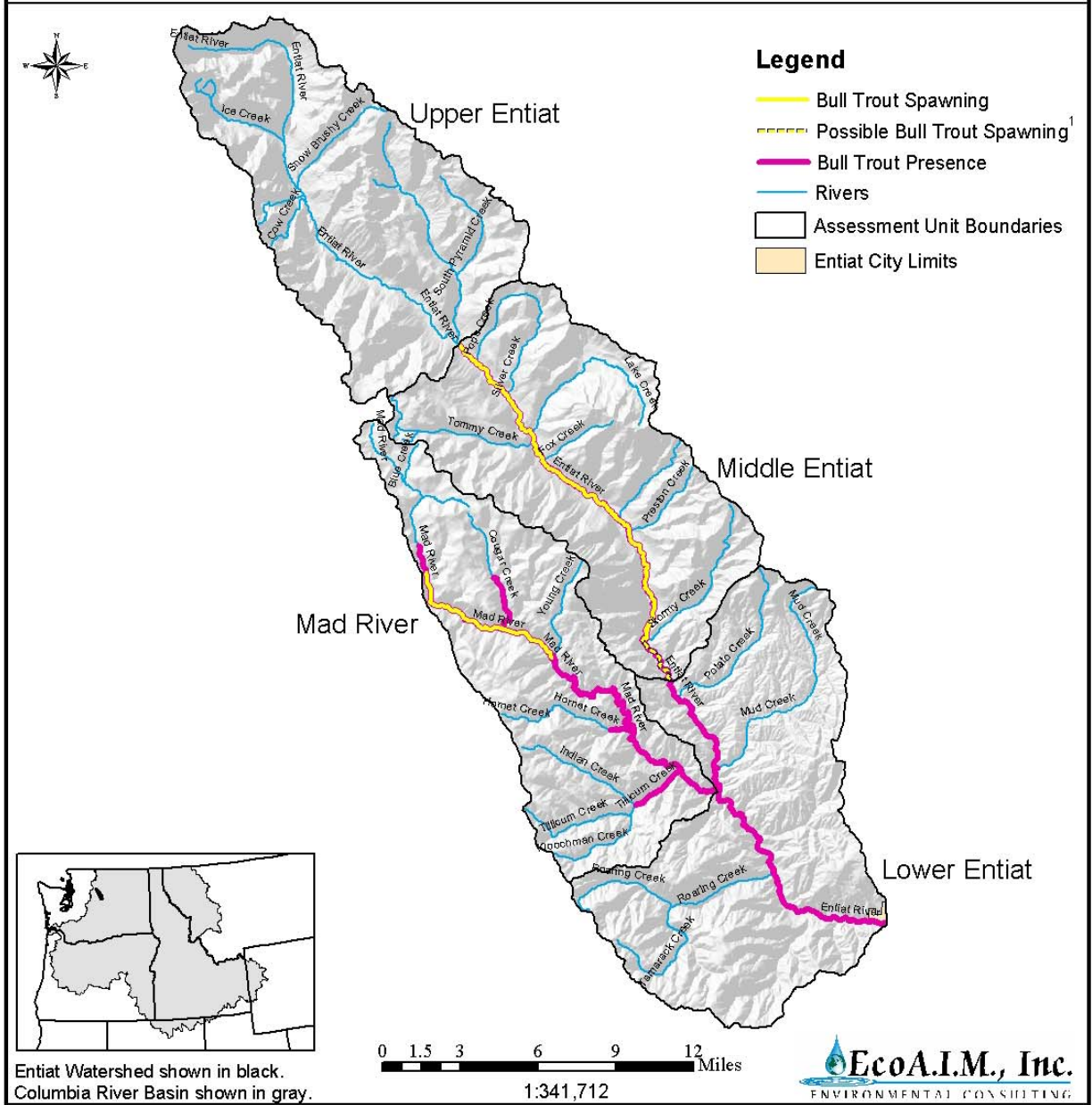
Note: Only "Documented" data for "presence/migration" and "spawning" are mapped. "Documented" rearing, as well as "Presumed" and "Potential" values were not included.

Disclaimer: EcoA.I.M. makes no claim as to the accuracy or current condition of the data shown on this map.



# Entiat Watershed

## Draft Bull Trout



Map Date: May 12, 2004

Data Sources: City Limits (DOT), Rivers (WDFW), Bull Trout<sup>2</sup> (WDFW Fish, 2003), Bull Trout<sup>2</sup> (USFS, 2003), Assessment Units (EcoA.I.M.), and Hillshade Relief (DOT).

<sup>1</sup>: Data from USFWS personnel and Critical Habitat document, based on potential bull trout redds identified during a survey.

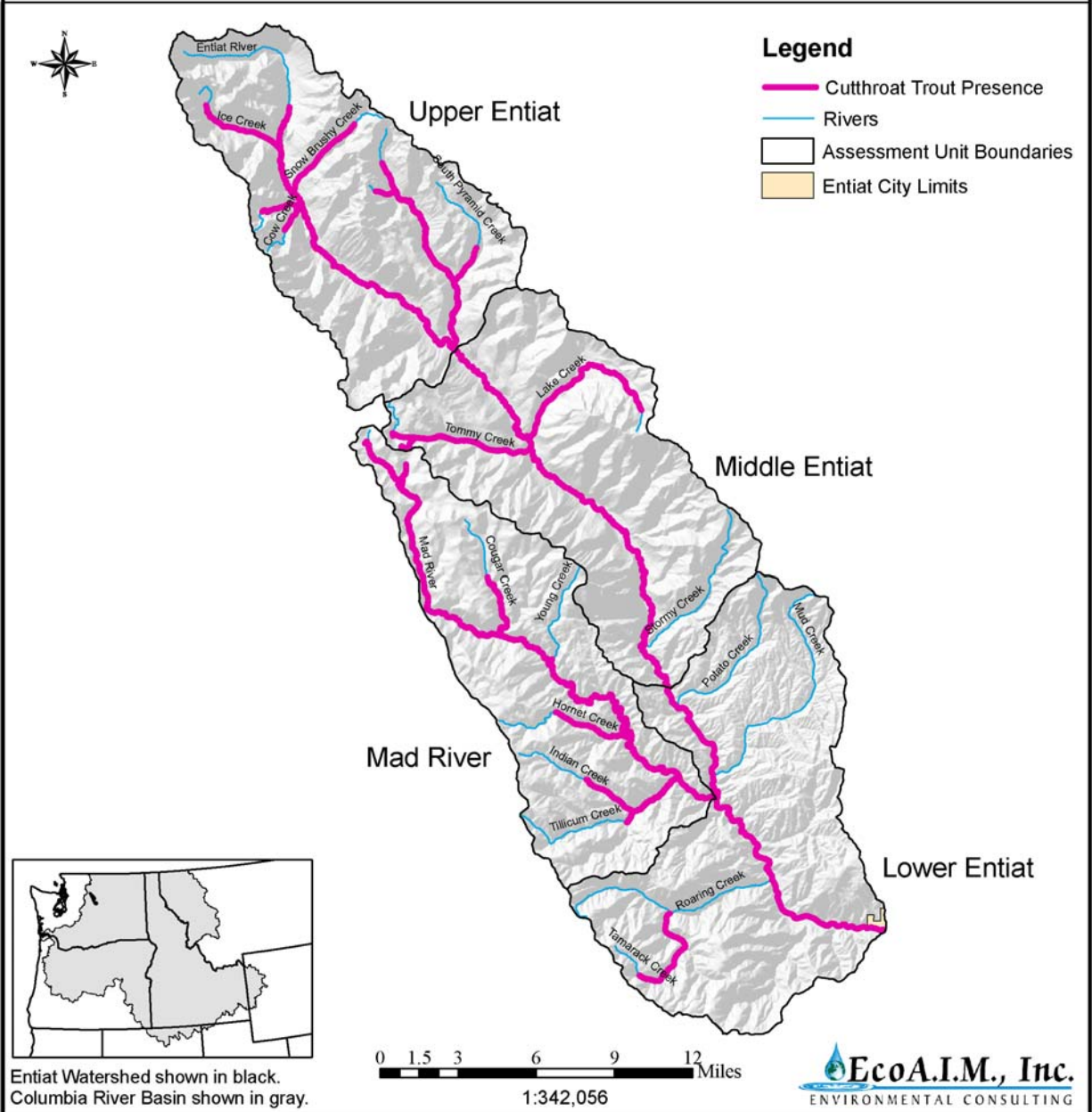
<sup>2</sup>: These datasets were modified to include current knowledge.

Note: Only "Documented" data for "presence/migration" and "spawning" are mapped. "Documented" rearing, as well as "Presumed" and "Potential" values were not included.

Disclaimer: EcoA.I.M. makes no claim as to the accuracy or current condition of the data shown on this map.

# Entiat Watershed

## Cutthroat Trout Presence



Summary of information from WDFW Fish Stocking Database, prepared by Phil Archibald,  
USFS WNF Entiat Ranger District Fisheries Biologist, December 2003.

Species Codes:

CT = cutthroat trout, EB = Eastern brook trout, GT = golden trout, RB = rainbow,  
SH = general steelhead, SS = summer steelhead, WCT = Westslope cutthroat trout.

| Year | Species    | Number | Water stocked           |
|------|------------|--------|-------------------------|
| 1933 | EB         | 85000  | ENTIAT RIVER            |
| 1933 | RB         | 56000  | ENTIAT RIVER            |
| 1933 | RB         | 20000  | NORTH FORK ENTIAT RIVER |
| 1933 | RB         | 15000  | SILVER CREEK            |
| 1933 | RB         | 4000   | POPE CREEK              |
| 1933 | RB         | 15000  | LAKE CREEK              |
|      |            |        |                         |
| 1934 | RB         | 7500   | NORTH FORK ENTIAT RIVER |
| 1934 | RB         | 219400 | ENTIAT RIVER            |
| 1934 | EB         | 2600   | ENTIAT RIVER            |
| 1934 | CT(B SPOT) | 50000  | ENTIAT RIVER            |
| 1934 | CT         | 102100 | ENTIAT RIVER            |
| 1934 | CT         | 18750  | MAD RIVER               |
| 1934 | CT         | 8500   | TWO LITTLE LAKES        |
| 1934 | CT         | 4000   | LOST LAKE               |
| 1934 | RB         | 12500  | LARCH CREEK             |
|      |            |        |                         |
| 1935 | EB         | 37000  | ENTIAT RIVER            |
| 1935 | RB         | 37500  | ENTIAT RIVER            |
| 1935 | CT         | 20000  | ENTIAT RIVER            |
| 1935 | RB         | 25000  | SNOWBRUSHY CREEK        |
| 1935 | EB         | 13000  | MYRTLE LAKE             |
| 1935 | CT         | 20000  | SILVER CREEK            |
|      |            |        |                         |
| 1936 | EB         | 8000   | ENTIAT RIVER            |
| 1936 | RB         | 20000  | ENTIAT RIVER            |
| 1936 | CT         | 6000   | ENTIAT RIVER            |
| 1936 | SH         | 44675  | ENTIAT RIVER            |
| 1936 | CT         | 4000   | NORTH FORK ENTIAT RIVER |
| 1936 | CT         | 3000   | INDIAN CREEK            |
| 1936 | RB         | 6000   | INDIAN CREEK            |
| 1936 | EB         | 25000  | MYRTLE LAKE             |
|      |            |        |                         |
| 1937 | SH         | 5000   | ENTIAT RIVER            |
| 1937 | EB         | 73950  | ENTIAT RIVER            |
| 1937 | RB         | 25050  | ENTIAT RIVER            |
| 1937 | RB         | 6000   | INDIAN CREEK            |
| 1937 | SH         | 3000   | MAD RIVER               |
| 1937 | RB         | 12000  | MAD RIVER               |

|      |    |       |                         |
|------|----|-------|-------------------------|
| 1937 | CT | 15000 | MAD RIVER               |
| 1937 | EB | 16500 | MYRTLE LAKE             |
| 1937 | EB | 5000  | MUD CREEK               |
| 1937 | RB | 5000  | LAKE CREEK              |
| 1937 | CT | 5000  | LAKE CREEK              |
|      |    |       |                         |
| 1938 | RB | 14950 | NORTH FORK ENTIAT RIVER |
| 1938 | EB | 15000 | ENTIAT RIVER            |
| 1938 | RB | 71080 | ENTIAT RIVER            |
| 1938 | CT | 8000  | MAD RIVER               |
| 1938 | RB | 53050 | MAD RIVER               |
| 1938 | RB | 10075 | SILVER CREEK            |
| 1938 | RB | 5000  | PYRAMID CREEK           |
| 1938 | RB | 10075 | POPE CREEK              |
| 1938 | RB | 9840  | LAKE CREEK              |
|      |    |       |                         |
| 1939 | RB | 38121 | ENTIAT RIVER            |
| 1939 | RB | 4679  | CORRAL CREEK            |
| 1939 | CT | 5000  | CORRAL CREEK            |
| 1939 | RB | 3056  | PYRAMID CREEK           |
| 1939 | RB | 3053  | TOMMY CREEK             |
| 1939 | RB | 22945 | MAD RIVER               |
| 1939 | RB | 2000  | INDIAN CREEK            |
| 1939 | CT | 9200  | COUGAR CREEK            |
|      |    |       |                         |
| 1940 | RB | 50951 | ENTIAT RIVER            |
| 1940 | RB | 4988  | TWO LITTLE LAKES        |
| 1940 | RB | 9925  | LAKE CREEK              |
| 1940 | RB | 3000  | MUDDY CREEK             |
| 1940 | RB | 24897 | MAD RIVER               |
| 1940 | RB | 20850 | INDIAN CREEK            |
| 1940 | RB | 11950 | COUGAR CREEK            |
| 1940 | CT | 12490 | LOST LAKE               |
|      |    |       |                         |
| 1941 | RB | 44116 | ENTIAT RIVER            |
| 1941 | CT | 9875  | ENTIAT RIVER            |
| 1941 | CT | 52775 | NORTH FORK ENTIAT RIVER |
| 1941 | RB | 16000 | COUGAR CREEK            |
| 1941 | RB | 1906  | MAD RIVER               |
| 1941 | RB | 28491 | INDIAN CREEK            |
| 1941 | RB | 14470 | LAKE CREEK              |
|      |    |       |                         |
| 1942 | RB | 59992 | ENTIAT RIVER            |
| 1942 | RB | 5000  | POTATO CREEK            |
| 1942 | RB | 21991 | ROARING CREEK           |
| 1942 | RB | 7991  | MUDDY CREEK             |
| 1942 | RB | 26480 | INDIAN CREEK            |

|      |    |        |                         |
|------|----|--------|-------------------------|
| 1942 | CT | 19900  | LOST LAKE               |
| 1942 | CT | 15000  | LAKE CREEK              |
|      |    |        |                         |
| 1943 | RB | 30500  | NORTH FORK ENTIAT RIVER |
| 1943 | RB | 61960  | ENTIAT RIVER            |
| 1943 | RB | 39989  | MAD RIVER               |
| 1943 | RB | 44973  | INDIAN CREEK            |
|      |    |        |                         |
| 1944 | RB | 11800  | NORTH FORK ENTIAT RIVER |
| 1944 | RB | 109000 | ENTIAT RIVER            |
| 1944 | CT | 4400   | ENTIAT RIVER            |
| 1944 | RB | 70000  | MAD RIVER               |
| 1944 | CT | 4000   | POPE CREEK              |
| 1944 | RB | 33600  | INDIAN CREEK            |
| 1944 | CT | 2000   | LOST LAKE               |
|      |    |        |                         |
| 1945 | RB | 37500  | ENTIAT RIVER            |
| 1945 | CT | 19990  | ENTIAT RIVER            |
| 1945 | CT | 19990  | MAD RIVER               |
| 1945 | RB | 19872  | INDIAN CREEK            |
| 1945 | CT | 12580  | LOST LAKE               |
| 1945 | CT | 10064  | LAKE CREEK              |
|      |    |        |                         |
| 1946 | RB | 19996  | ENTIAT RIVER            |
| 1946 | CT | 10240  | TWO LITTLE LAKES        |
| 1946 | RB | 16000  | INDIAN CREEK            |
| 1946 | CT | 18000  | LAKE CREEK              |
|      |    |        |                         |
| 1947 | RB | 71990  | ENTIAT RIVER            |
| 1947 | CT | 17925  | ENTIAT RIVER            |
| 1947 | CT | 4000   | ICE CREEK               |
| 1947 | CT | 29800  | TWO LITTLE LAKES        |
| 1947 | RB | 23950  | SNOWBRUSHY CREEK        |
| 1947 | RB | 23375  | LAKE CREEK              |
| 1947 | RB | 27042  | MAD RIVER               |
| 1947 | RB | 49039  | INDIAN CREEK            |
|      |    |        |                         |
| 1948 | RB | 54522  | ENTIAT RIVER            |
| 1948 | RB | 27900  | NORTH FORK ENTIAT RIVER |
| 1948 | RB | 13900  | FERN LAKE               |
| 1948 | CT | 10100  | LAKE CREEK              |
| 1948 | EB | 15000  | ROARING CREEK           |
| 1948 | EB | 13500  | MUDDY CREEK             |
| 1948 | RB | 15600  | INDIAN CREEK            |
| 1948 | RB | 5200   | MAD RIVER               |
|      |    |        |                         |
| 1949 | RB | 22327  | ENTIAT RIVER            |



|      |    |       |                           |
|------|----|-------|---------------------------|
| 1949 | SH | 19817 | ENTIAT RIVER              |
| 1949 | CT | 20000 | ICE LAKE                  |
| 1949 | EB | 6400  | MUD CREEK                 |
| 1949 | CT | 25000 | LOST LAKE                 |
| 1949 | RB | 3590  | MAD RIVER                 |
| 1949 | EB | 1254  | SWAKANE CREEK BEAVER POND |
|      |    |       |                           |
| 1950 | RB | 21054 | ENTIAT RIVER              |
| 1950 | CT | 6800  | TWO LITTLE LAKES          |
| 1950 | RB | 1060  | ARDENVOIR MILL POND       |
| 1950 | RB | 3900  | MUD CREEK                 |
| 1950 | EB | 10150 | MUD CREEK                 |
| 1950 | RB | 4929  | MAD RIVER                 |
| 1950 | CT | 10600 | MAD LAKE                  |
| 1950 | EB | 4000  | SWAKANE CREEK BEAVER POND |
|      |    |       |                           |
| 1951 | RB | 25610 | ENTIAT RIVER              |
| 1951 | CT | 4032  | TWO LITTLE LAKES          |
| 1951 | RB | 3295  | ARDENVOIR MILL POND       |
| 1951 | EB | 15720 | ROARING CREEK             |
| 1951 | EB | 9975  | MUD CREEK                 |
| 1951 | CT | 3900  | LOST LAKE                 |
| 1951 | RB | 4000  | MAD RIVER                 |
|      |    |       |                           |
| 1952 | RB | 34106 | ENTIAT RIVER              |
| 1952 | RB | 5500  | MAD RIVER                 |
|      |    |       |                           |
| 1953 | RB | 24080 | ENTIAT RIVER              |
| 1953 | RB | 2496  | ARDENVOIR JUVENILE POND   |
| 1953 | EB | 14700 | MUD CREEK                 |
| 1953 | CT | 10000 | LOST LAKE                 |
| 1953 | RB | 5504  | MAD RIVER                 |
|      |    |       |                           |
| 1954 | RB | 14600 | ENTIAT RIVER              |
| 1954 | CT | 2000  | INDIAN CREEK              |
| 1954 | CT | 10000 | LOST LAKE                 |
| 1954 | EB | 5200  | SWAKANE CREEK BEAVER POND |
|      |    |       |                           |
| 1955 | RB | 15394 | ENTIAT RIVER              |
| 1955 | CT | 5000  | FERN LAKE                 |
| 1955 | CT | 5000  | LOST LAKE                 |
| 1955 | RB | 2450  | MAD RIVER                 |
|      |    |       |                           |
| 1956 | RB | 13553 | ENTIAT RIVER              |
| 1956 | RB | 2520  | MAD RIVER                 |
|      |    |       |                           |
| 1957 | RB | 13170 | ENTIAT RIVER              |

|      |    |       |                           |
|------|----|-------|---------------------------|
| 1957 | EB | 4000  | MUD CREEK                 |
| 1957 | RB | 900   | MAD RIVER                 |
|      |    |       |                           |
| 1958 | RB | 17422 | ENTIAT RIVER              |
| 1958 | EB | 7680  | MUDDY CREEK               |
| 1958 | RB | 4945  | MAD RIVER                 |
| 1958 | EB | 5760  | SWAKANE CREEK BEAVER POND |
|      |    |       |                           |
| 1959 | RB | 14000 | ENTIAT RIVER              |
|      |    |       |                           |
| 1960 | RB | 21278 | ENTIAT RIVER              |
| 1960 | CT | 3000  | LOST LAKE                 |
| 1960 | RB | 2139  | MAD RIVER                 |
|      |    |       |                           |
| 1961 | RB | 30340 | ENTIAT RIVER              |
| 1961 | CT | 2125  | LOST LAKE                 |
| 1961 | RB | 1950  | MAD RIVER                 |
|      |    |       |                           |
| 1962 | RB | 35282 | ENTIAT RIVER              |
| 1962 | RB | 2015  | MAD RIVER                 |
| 1962 | EB | 3060  | SWAKANE CREEK BEAVER POND |
|      |    |       |                           |
| 1963 | RB | 11184 | ENTIAT RIVER              |
| 1963 | RB | 2107  | MAD RIVER                 |
|      |    |       |                           |
| 1964 | RB | 10887 | ENTIAT RIVER              |
| 1964 | SH | 47353 | ENTIAT RIVER              |
| 1964 | CT | 3485  | LOST LAKE                 |
| 1964 | RB | 6040  | MAD RIVER                 |
|      |    |       |                           |
| 1965 | SS | 22494 | ENTIAT RIVER              |
| 1965 | RB | 19916 | ENTIAT RIVER              |
| 1965 | CT | 3200  | ICE LAKE                  |
| 1965 | CT | 2145  | MAD LAKE                  |
| 1965 | RB | 3000  | MAD RIVER                 |
|      |    |       |                           |
| 1966 | RB | 12787 | ENTIAT RIVER              |
| 1966 | CT | 2567  | FERN LAKE                 |
| 1966 | CT | 1963  | TWO LITTLE LAKES          |
| 1966 | RB | 5179  | MAD RIVER                 |
|      |    |       |                           |
| 1967 | SS | 17000 | ENTIAT RIVER              |
| 1967 | RB | 30008 | ENTIAT RIVER              |
| 1967 | CT | 2990  | LOST LAKE                 |
| 1967 | RB | 5004  | MAD RIVER                 |
|      |    |       |                           |
| 1968 | SS | 25360 | ENTIAT RIVER              |

|      |    |       |                           |
|------|----|-------|---------------------------|
| 1968 | RB | 6448  | ENTIAT RIVER              |
| 1968 | RB | 3000  | MAD RIVER                 |
|      |    |       |                           |
| 1969 | SS | 49625 | ENTIAT RIVER              |
| 1969 | RB | 29634 | ENTIAT RIVER              |
| 1969 | RB | 5000  | MAD RIVER                 |
|      |    |       |                           |
| 1970 | SS | 58390 | ENTIAT RIVER              |
| 1970 | RB | 36572 | ENTIAT RIVER              |
| 1970 | CT | 4032  | TWO LITTLE LAKES          |
| 1970 | RB | 2500  | MAD RIVER                 |
| 1970 | EB | 3955  | SWAKANE CREEK BEAVER POND |
|      |    |       |                           |
| 1971 | SS | 50870 | ENTIAT RIVER              |
| 1971 | RB | 13000 | ENTIAT RIVER              |
| 1971 | RB | 5000  | MUD CREEK                 |
| 1971 | CT | 1216  | LOST LAKE                 |
|      |    |       |                           |
| 1972 | SS | 58570 | ENTIAT RIVER              |
| 1972 | RB | 30289 | ENTIAT RIVER              |
| 1972 | RB | 2500  | MAD RIVER                 |
|      |    |       |                           |
| 1973 | SS | 26319 | ENTIAT RIVER              |
| 1973 | RB | 28985 | ENTIAT RIVER              |
| 1973 | EB | 260   | TILlicum CREEK            |
| 1973 | CT | 2000  | INDIAN CREEK              |
| 1973 | RB | 3014  | MAD RIVER                 |
| 1973 | EB | 260   | MAD RIVER                 |
|      |    |       |                           |
| 1974 | SS | 45905 | ENTIAT RIVER              |
| 1974 | RB | 40049 | ENTIAT RIVER              |
| 1974 | CT | 2000  | ENTIAT RIVER              |
| 1974 | CT | 2000  | LOST LAKE                 |
| 1974 | RB | 810   | MAD RIVER                 |
| 1974 | EB | 3105  | SWAKANE CREEK BEAVER POND |
|      |    |       |                           |
| 1975 | SS | 40960 | ENTIAT RIVER              |
| 1975 | RB | 15167 | ENTIAT RIVER              |
| 1975 | RB | 2090  | MAD RIVER                 |
|      |    |       |                           |
| 1976 | SS | 44122 | ENTIAT RIVER              |
| 1976 | RB | 15431 | ENTIAT RIVER              |
| 1976 | CT | 8012  | ICE LAKE                  |
| 1976 | CT | 2042  | MYRTLE LAKE               |
| 1976 | RB | 1487  | MAD RIVER                 |
|      |    |       |                           |
| 1977 | SS | 45011 | ENTIAT RIVER              |

|      |                |       |                  |
|------|----------------|-------|------------------|
| 1977 | RB             | 14828 | ENTIAT RIVER     |
| 1977 | CT(TWLKCUTT)   | 3040  | MYRTLE LAKE      |
| 1977 | CT(TWLK CUTT.) | 160   | CHORAL LAKE      |
| 1977 | GT(G. TROUT)   | 1200  | CHORAL LAKE      |
| 1977 | CT             | 3040  | FERN LAKE        |
| 1977 | RB             | 1544  | MAD RIVER        |
|      |                |       |                  |
| 1978 | SS             | 33264 | ENTIAT RIVER     |
| 1978 | RB             | 14543 | ENTIAT RIVER     |
| 1978 | RB             | 2026  | MAD RIVER        |
|      |                |       |                  |
| 1979 | SS             | 41640 | ENTIAT RIVER     |
| 1979 | RB             | 14240 | ENTIAT RIVER     |
| 1979 | RB             | 3105  | MAD RIVER        |
|      |                |       |                  |
| 1980 | SS             | 16780 | ENTIAT RIVER     |
| 1980 | RB             | 16053 | ENTIAT RIVER     |
| 1980 | RB             | 1511  | MAD RIVER        |
|      |                |       |                  |
| 1981 | SS             | 35536 | ENTIAT RIVER     |
| 1981 | RB             | 17436 | ENTIAT RIVER     |
| 1981 | RB             | 5178  | MAD RIVER        |
|      |                |       |                  |
| 1982 | SS             | 41254 | ENTIAT RIVER     |
| 1982 | RB             | 16701 | ENTIAT           |
| 1982 | RB             | 3470  | MAD              |
|      |                |       |                  |
| 1983 | WCT            | 3696  | ICE LAKES (BOTH) |
| 1983 | SS             | 48328 | ENTIAT           |
| 1983 | RB             | 17159 | ENTIAT           |
| 1983 | RB             | 1100  | MAD              |
|      |                |       |                  |
| 1984 | SS             | 47021 | ENTIAT           |
| 1984 | RB             | 22149 | ENTIAT           |
| 1984 | RB             | 1542  | MAD              |
|      |                |       |                  |
| 1985 | SS             | 44280 | ENTIAT           |
|      |                |       |                  |
| 1986 | SS             | 46185 | ENTIAT           |
| 1986 | RB             | 21440 | ENTIAT           |
| 1986 | RB             | 2520  | MAD              |
|      |                |       |                  |
| 1987 | SS             | 46520 | ENTIAT           |
| 1987 | RB             | 20280 | ENTIAT           |
| 1987 | RB             | 2400  | MAD              |
|      |                |       |                  |
| 1988 | SS             | 43960 | ENTIAT           |



|      |     |       |                               |
|------|-----|-------|-------------------------------|
| 1988 | RB  | 16365 | ENTIAT                        |
| 1988 | RB  | 2055  | MAD                           |
|      |     |       |                               |
| 1989 | GT  | 90    | CHORAL LAKE                   |
| 1989 | SS  | 38350 | ENTIAT                        |
| 1989 | RB  | 23560 | ENTIAT                        |
| 1989 | RB  | 1180  | MAD                           |
|      |     |       |                               |
| 1990 | SS  | 36915 | ENTIAT RM 10                  |
| 1990 | RB  | 12540 | ENTIAT                        |
| 1990 | WCT | 200   | UNNAMED LAKE                  |
| 1990 | RB  | 1010  | MAD                           |
|      |     |       |                               |
| 1991 | SS  | 47360 | ENTIAT RM 10                  |
| 1991 | RB  | 18772 | ENTIAT                        |
| 1991 | RB  | 1050  | MAD                           |
|      |     |       |                               |
| 1992 | SS  | 47270 | ENTIAT RM 10                  |
| 1992 | RB  | 11755 | ENTIAT                        |
| 1992 | RB  | 680   | MAD                           |
|      |     |       |                               |
| 1993 | SS  | 41480 | ENTIAT RM 10                  |
| 1993 | RB  | 9790  | ENTIAT                        |
| 1993 | RB  | 510   | MAD                           |
|      |     |       |                               |
| 1994 | SS  | 43210 | ENTIAT RM 10                  |
| 1994 | RB  | 6640  | ENTIAT                        |
| 1994 | RB  | 60    | LOST LAKE                     |
|      |     |       |                               |
| 1995 | SS  | 46740 | ENTIAT RM 10                  |
|      |     |       |                               |
| 1996 | SS  | 39000 | ENTIAT RM 10                  |
|      |     |       |                               |
| 1997 | SS  | 40950 | ENTIAT RM 10                  |
|      |     |       |                               |
| 1998 | SS  | 42180 | ENTIAT RM 10                  |
|      |     |       |                               |
| 1999 | SS  | 45080 | ENTIAT RM 10                  |
|      |     |       |                               |
| 2000 | SS  | 0     | ENTIAT SS STOCKING DISCONT'D. |

### Entiat River Fishing Regulations

Special Restrictions from Mouth to Entiat Falls (RM 33.8), 2000-2004

No Special Restrictions from Entiat Falls to Headwaters

| Year/Location                   | Open for Other Game Fish?                                                                                                                                                              | Bull Trout Fishery? | Steelhead Fishery?                                                                               | Salmon Fishery? |
|---------------------------------|----------------------------------------------------------------------------------------------------------------------------------------------------------------------------------------|---------------------|--------------------------------------------------------------------------------------------------|-----------------|
| 2000-2004<br>Mouth-Entiat Falls | <b>Dec 1-Mar 31</b><br>Open for Whitefish only with gear restrictions.                                                                                                                 | No                  | No                                                                                               | No              |
| 1999-2000                       |                                                                                                                                                                                        |                     |                                                                                                  |                 |
| 1998-1999                       | <b>June 1-Aug 31</b><br>All game fish except steelhead with selective gear rules.<br><b>Dec 1-Mar 31</b><br>Open for Whitefish with selective gear.                                    | No                  | No                                                                                               | No              |
| 1997-1998                       | <b>June 1-Mar 31</b><br>Season for trout, limit 2.<br><b>June 1-Nov 30</b><br>All Other game fish, selective gear rules.                                                               | No                  | Release Wild Steelhead, <b>June 1-Mar 31</b> , can take 2/5 Trout per day as Steelhead           | No              |
| 1996-1997                       |                                                                                                                                                                                        |                     |                                                                                                  |                 |
| 1995-1996                       | <b>June 1-Mar 1</b><br>Season for trout, limit 2. Other game fish, selective gear rules <b>June 1-Nov 30</b>                                                                           | No                  | Release Wild Steelhead, <b>June 1-Nov 30</b> , can take 2/5 Trout limit per day as steelhead     | No              |
| 1994-1995                       | <b>June 1-Nov 30</b><br>Season, Trout limit 2, all other game fish, selective gear rules.<br><b>Dec 1-Mar 31</b><br>Season for Trout and all other game fish, no selective gear rules. | No                  | Release Wild Steelhead from <b>June 1-Nov 30</b> , can take 2/5 Trout limit per day as Steelhead | No              |
| 1993-1994                       | <b>June 1-Mar 31</b><br>Season for trout, limit 2,<br><b>Bait prohibited</b><br><b>June 1-Nov 30</b>                                                                                   | No                  | <b>June 1-Mar 31</b><br>season Release Wild Steelhead, Annual limit 30/year                      | No              |