



This institution is an equal opportunity provider.



CASCADIA
CONSERVATION DISTRICT

CONSERVATION QUARTERLY

COMMUNITY SPOTLIGHT: FOREST RIDGE WILDFIRE COALITION

Near the top of Squilchuck Rd, just below Mission Ridge Ski Area, sits a neighborhood of about 100 homes. Almost two decades have passed since Forest Ridge became the first Firewise Community in Chelan County. With steep slopes, dense vegetation throughout, and covenants once requiring wood shake roofs there was ample reason for concern.



Forest Ridge Wildfire Coalition (FRWC) tackled these concerns one-by-one over the years through projects like community education, chipping programs, defensible space assessments, and working with neighboring landowners to complete fuel treatments on state and private land.

Over 400 community members participated in a town hall meeting where an expert panel discussed pathways toward a more fire adapted community. Drone footage of the Forest Ridge neighborhood captured in a short film was used as a case study for a wildfire disaster waiting to happen.

In 2008, FWRC worked with the local fire district to create a 100 foot wide fuel break on the adjacent Scout-A-Vista Boy Scout Camp land. This



After the 2015 wildfire season, residents around Chelan County were intent on finding ways to reduce risk to their communities.

Photos: Wenatchee Valley Fire District teams up with FWRC to host a chainsaw training course for landowners in shaded fuel break behind Forest Ridge neighborhood.

was a good start, but the locals knew fuels reduction to the top of the ridge and with other neighboring landowners was needed. A coordinated effort kicked-off in 2017 when Squilchuck State Park began forest health thinning in FWRC's back yard.

In 2019-2022, Chelan County brought logging and prescribed burns in the Stemilt Community Forest, followed by fuels work by the Ski Area, and several large private landowners completed WA DNR forest health cost-share projects. After almost seven years of waiting, property ownership changes, and a detailed environmental analysis from FEMA; grant funding finally made it to the ground this spring and 36 acres of the (formerly) Scout-A-Vista camp were thinned directly adjacent to the neighborhood.

Ten years later much of the landscape around this community resembles a healthier forest typical of 200 years ago.

Last month, several of the scientists from the 2015 town hall meeting expert panel reconvened to discuss preserving old growth trees in fire adapted Eastern Washington forests. The discussion was sobering.

In closing remarks the moderator asked, **"Can you tell us about a landscape where we are doing a good job of reducing wildfire risk and restoring the forest?"**

It was encouraging when a panelist replied, "Squilchuck. Through partnerships, coordination, and successful grant funding, public and private landowners have completed over 3,000 acres of strategic fuel reduction."

FWRC was critical to much of this work, and has contributed greatly to improving forest health and reducing wildfire risk to communities in the Squilchuck Valley.

If your community is interested in working together to create a fuel break around the neighborhood please reach out to Partick Haggerty at patrickh@cascadiacd.org.

LOCAL
POSTAL CUSTOMER

Non-Profit Org.
US POSTAGE
PAID
PERMIT # 40
Wenatchee, WA
ECRWSS

Cascadia Conservation District
1350 McKittick St, Ste B
Wenatchee, WA 98801



Is your home ready for Wildfire?

Cascadia Conservation District can help!

HOME HARDENING INCENTIVE PROGRAM

Residents of Chelan County are eligible for up to a \$600 incentive payment for preparing their homes or structures for wildfire

Please contact us for a free home risk assessment to help you choose which home hardening practice(s) would be the best fit for your home and property:
IsobelW@cascadiacd.org or (509) 312-8555
JoeH@cascadiacd.org or (509) 306-8189



HELP YOUR COMMUNITY

Prepare for wildfire season

Are you financially, physically, or otherwise unable to reduce wildfire fuels around your home?

If you live in Leavenworth, Cashmere, or the Lake Wenatchee area, support is available from your local Fire District and Cascadia Conservation District!

NO COST SERVICES OFFERED

- Thinning brush
- Pruning tree limbs
- Removing debris like leaves and pine needles

Your efforts within 100' of your home can help protect your home and community in the event of a wildfire.

SIGN UP OR HELP A NEIGHBOR SIGN UP:

Contact Person: Isobel Woolner
(509) 312-8555 - IsobelW@cascadiacd.org



Cascadia is partnering with a local crew, Leavenworth Fire District 3 and Lake Wenatchee Fire and Rescue to make fuels reduction more accessible to community members in the Cashmere, Leavenworth and Lake Wenatchee areas.

If you or someone you know would like support with fuels reduction around the home, assistance is available. Contact Isobel Woolner (info above) at Cascadia for more information and how to apply.

SUCCESSFUL LEARN & BURNS IN LEAVENWORTH

A three-acre burn outside of Leavenworth brought 15 volunteers to assist in the kickoff burn to the fall season. The landowner had previously thinned the forest, and this burn successfully reduced a majority of sticks and logs on the ground as well as some of the brush to charcoal and ash, recycling nutrients into the ground, providing an ideal seedbed for grasses and wildflowers as well as providing more water retention and availability to the residual vegetation.



Burning into the evening, this three-acre prescribed fire outside Leavenworth was follow-up to a previous fuels reduction treatment. The burn had 15 volunteers, helped create a buffer around the house that would not burn as hot in a wildfire, reduced the risk to the structures, and was a DNR Certified Burner checkoff burn for a local burn leader.



33 volunteers helped with the prescribed fire at Camp CAMREC up Little Chumstick. The eight-acre footprint had varying slopes, aspects, and vegetation which made it a complicated burn, but the group pulled it off flawlessly. Seasoned participants mentored those new to fire to help pass the proverbial "torch of knowledge" & ensure things went to plan. It was a great cap to the two Learn and Burn classes hosted at the camp this year.



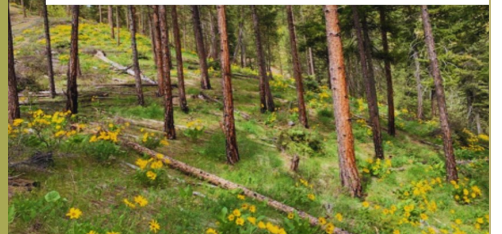

CASCADIA CONSERVATION DISTRICT
Forest Health
Cost Share
Can cover up to 80% of the cost of forest health and fuels reduction treatments

FOR MORE INFO OR TO APPLY CONTACT:

IsobelW@cascadiacd.org or (509) 312-8555

JoeH@cascadiacd.org or (509) 306-8189

All landowners in Chelan County are eligible to apply



The programs on this page are supported with funding from Washington's Climate Commitment Act. The CCA puts cap-and-invest dollars to work reducing climate pollution, creating jobs, and improving public health. Information about the CCA is available at www.climate.wa.gov.

AGRICULTURE

FUNDING

OPPORTUNITIES



CONTACT US TODAY!

509-436-1601

info@cascadiacd.org



- **Livestock management (all types of livestock):**
 - Pasture seeding
 - Heavy use areas
 - Waste management
- Irrigation upgrades
- Hedgerows and windbreaks
- Cover crops and pollinator seeding
- and more!

REIMBURSEMENT UP TO 50% FOR CONSERVATION PRACTICES!

The Sustainable Farms and Fields grant "Increasing Climate Smart Practices on Livestock Management" is supported with funding from Washington's Climate Commitment Act. The CCA supports Washington's climate action efforts by putting cap-and-invest dollars to work reducing climate pollution, creating jobs, and improving public health. Information about the CCA is available at www.climate.wa.gov.

CREATING CONNECTIONS TO CONSERVATION

A HUGE thank you to all of our partners and funders who helped us provide local students with place-based, career-connected learning through Kids in the Creek and Kids in the Forest this fall!



Partners: Cascade Fisheries, Cascade Quality Water, Chelan County Fire District 1, Chelan County Natural Resources Department, City of Wenatchee, Columbia Breaks Fire Interpretive Center, Douglas County PUD, US Department of Agriculture, US Fish & Wildlife Service, US Forest Service, WA Department of Fish & Wildlife, WA Department of Natural Resources, several amazing community members/volunteers!

Funders: WA State Conservation Commission's Forest Health Grant, WA Department of Ecology and WA Recreation & Conservation Office's No Child Left Inside funding, South Douglas Conservation District!



KIDS IN THE FOREST
OVER 600 MIDDLE SCHOOL STUDENTS

Coming soon!

Orchard Feedback Workshop

Your opinion matters! Join us for an interactive workshop this winter. We want to hear about challenges pear growers face and the support you need to thrive.

Scan the QR code to sign up for workshop notifications.

Questions?
Contact Elizabeth at elizabethj@cascadiacd.org



Rebrand.ly/PearWorkshop

THANK YOU TO ALL WHO PARTICIPATED!!

PHOTO CONTEST RESULTS ARE IN!



SEE OUR FACEBOOK PAGE!

FACEBOOK.COM/CASCADIACD/

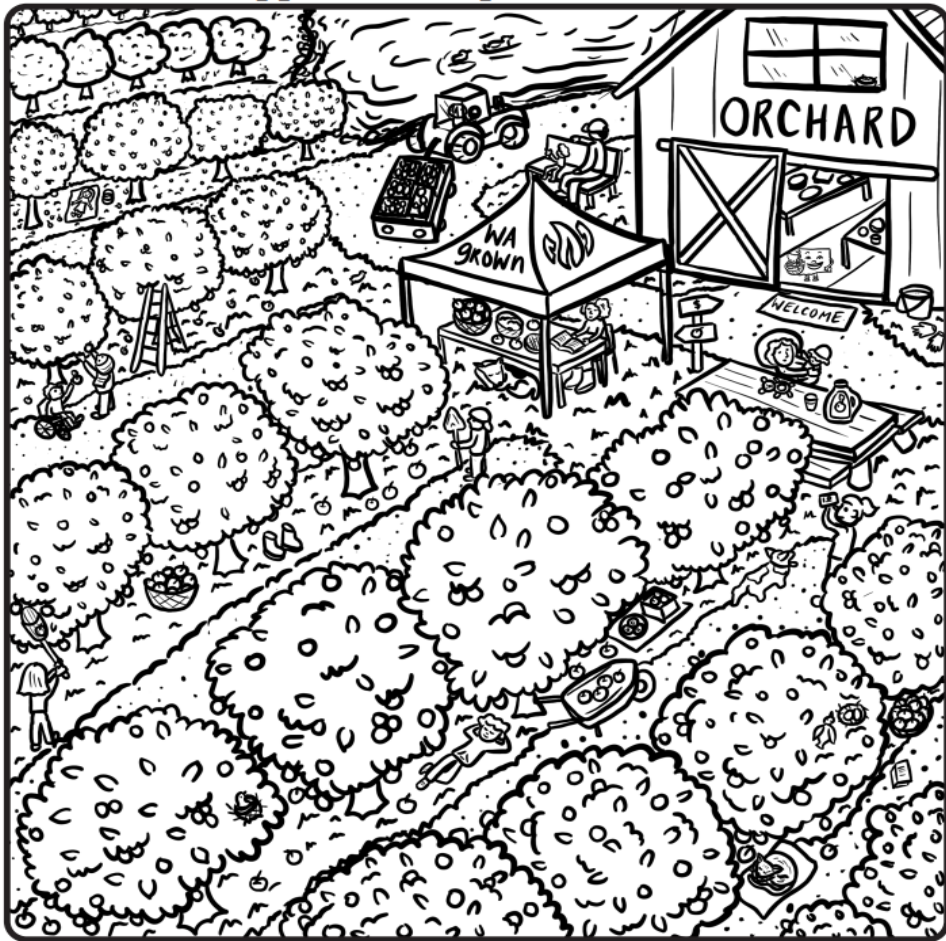


2025 CALENDAR FEATURING WINNING PHOTOS WILL BE AVAILABLE IN EARLY DECEMBER AT OUR OFFICE: 1350 MCKITTRICK ST., STE B, WENATCHEE.

FUNDING FOR THE CALENDAR IS PROVIDED BY: WA DEPARTMENT OF ECOLOGY, AND OTHER LOCAL SPONSORS AS FEATURED IN THE CALENDAR.

KIDS CORNER:

APPLE ORCHARD SEARCH



Color in the picture and find the following items in the apple orchard!



From the new **WA Grown Activity Book**.
More info at www.wagrown.com

Apples & pears

Did you know some pear trees can live more than 75 years? Washington's cold winter, rainy spring, and dry summer make it great for growing many kinds of pears.

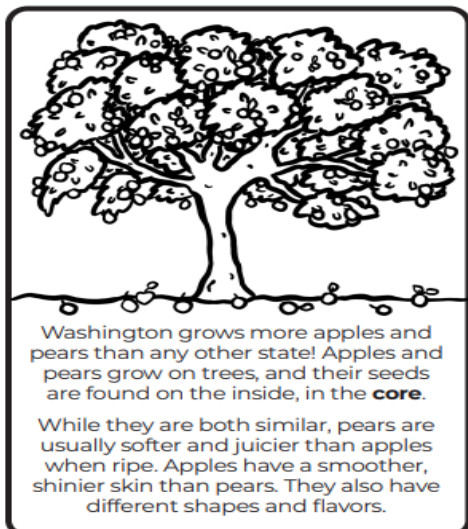


Jokes

Why was the fruit scared of the Arctic?
It was afraid of turning into a polar pear.

Who was flying the airplane full of fruity desserts?
The apple pie-lot.

Who tucks the baby fruit into bed at night?
Her pear-ents.



Washington grows more apples and pears than any other state! Apples and pears grow on trees, and their seeds are found on the inside, in the **core**.

While they are both similar, pears are usually softer and juicier than apples when ripe. Apples have a smoother, shinier skin than pears. They also have different shapes and flavors.



The apple is the official Washington state fruit, and apples have been grown in Washington for nearly 200 years!

UPCOMING MEETINGS & EVENTS

Cascadia Conservation District Board Meetings

Nov 15, Dec 20, Jan 17, 1:30-4:00 pm. Watch our website or call (509) 436-1601 for updates. Call-in/Zoom options are available.

***Strategic planning in progress. Watch our website for updates & opportunities to participate.**

Entiat Watershed Planning Unit Meeting

TBD, 4:00-7:00 pm, Entiat Fire Station, 2200 Entiat Way. Food provided. Call/Zoom participation available. Call (509) 436-1601 for details. (Next meeting date will be posted on Cascadia's website when confirmed: cascadiacd.org)

Chelan-Douglas Land Trust

- **Annual Celebration Dinner:** Nov 1, St. Josephs Church, 6pm-9pm. Contact danial@cdlandtrust.org or 509.667.9708
- **Seeding Work Party:** Nov 8, Kenzie's Landing Trailhead, 10am-1pm. Contact ayla@cdlandtrust.org or 509.667.9708
- **Ugly Sweater Stroll:** Nov 20, Jacobson Preserve, 4pm-5pm. Contact ayla@cdlandtrust.org or 509.667.9708
- **Outdoor Clothing Swap:** Dec 7, location TBD, 12am-3pm. Contact ayla@cdlandtrust.org or visit cdlandtrust.org
- **Winter Solstice:** Dec 21, Saddle Rock, time TBD. Contact ayla@cdlandtrust.org or visit cdlandtrust.org

Sustainable NCW:

Upcycled Crafts: Flower and Snowflake Making

Hosted by Sustainable NCW and Mary Charlee Designs
Nov 12, from 4:00-5:30 pm at the Cashmere Library, 300 Woodring St, Cashmere, WA. More info: <https://www.sustainablencw.org/events/recycled-paper-flowers-making-with-mary-henson-3>

Washington Native Plant Society

Ferns to Know in Chelan County: Dec 5, Wenatchee Valley Museum & Cultural Center, 7pm. "Ferns are important parts of many local ecosystems and are often overlooked; join us and learn more!".
Contact: Wenatchee Chapter of the Washington Native Plant Society, wenatcheevalleywnps@gmail.com



CASCADIA
CONSERVATION DISTRICT

Staff Members

♦ Administration:

Kathleen Deason, *Administrative Assistant*
Valerie Hampton, *Financial Coordinator*
Nada Wentz, *Office Assistant*

♦ Agriculture:

Elizabeth Jackson, *Program Director*
Marcy Bartelheimer, *Resource Specialist I*
Kelly Luebbing, *Resource Specialist I*

♦ Archaeology:

Mark Amara, *Archaeologist*
Kim Lancaster, *Archaeologist*

♦ Education & Outreach:

Kirk Beckendorf, *Environmental Educator*
Amanda Newell, *Education & Outreach*
Laura Rivera, *Bilingual Education & Outreach*

♦ Forestry:

Patrick Haggerty, *Forestry Program Manager*
Joe Hill, *Forest & Community Resilience*
Isobel Woolner, *Forest & Community Resilience*

♦ Management:

Ryan Williams, *Executive Director*

♦ Stream Restoration:

Alex Harwell, *Resource Specialist II*
Mark Ingman, *Resource Specialist II*
Lucas Lachica, *Resource Technician II*

1350 McKittrick St, Ste B,
Wenatchee, WA 98801
(509) 436 -1601
www.cascadiacd.org

Board of Supervisors

Junell Wentz, *Chair*
Dillon Miller, *Vice Chair*
Amy Bridges, *Auditor*
Kurt Hosman, *Member*
Pete Teigen, *Member*
Larry Cordes, *Associate*
Josh Koempel, *Associate*

The Conservation Quarterly is published on a quarterly basis by Cascadia Conservation District and reaches over 38,720 households in Chelan County.

This newsletter is funded in part by grants from the Washington State Conservation Commission and other public and private granting entities.

