

Envisioning a Preferred Future

Habitat Farming Enterprise Program

Demonstration Project: Sanray Orchards, Entiat Watershed, Washington

DEMONSTRATION PROJECT FINDINGS

Habitat Benefits:

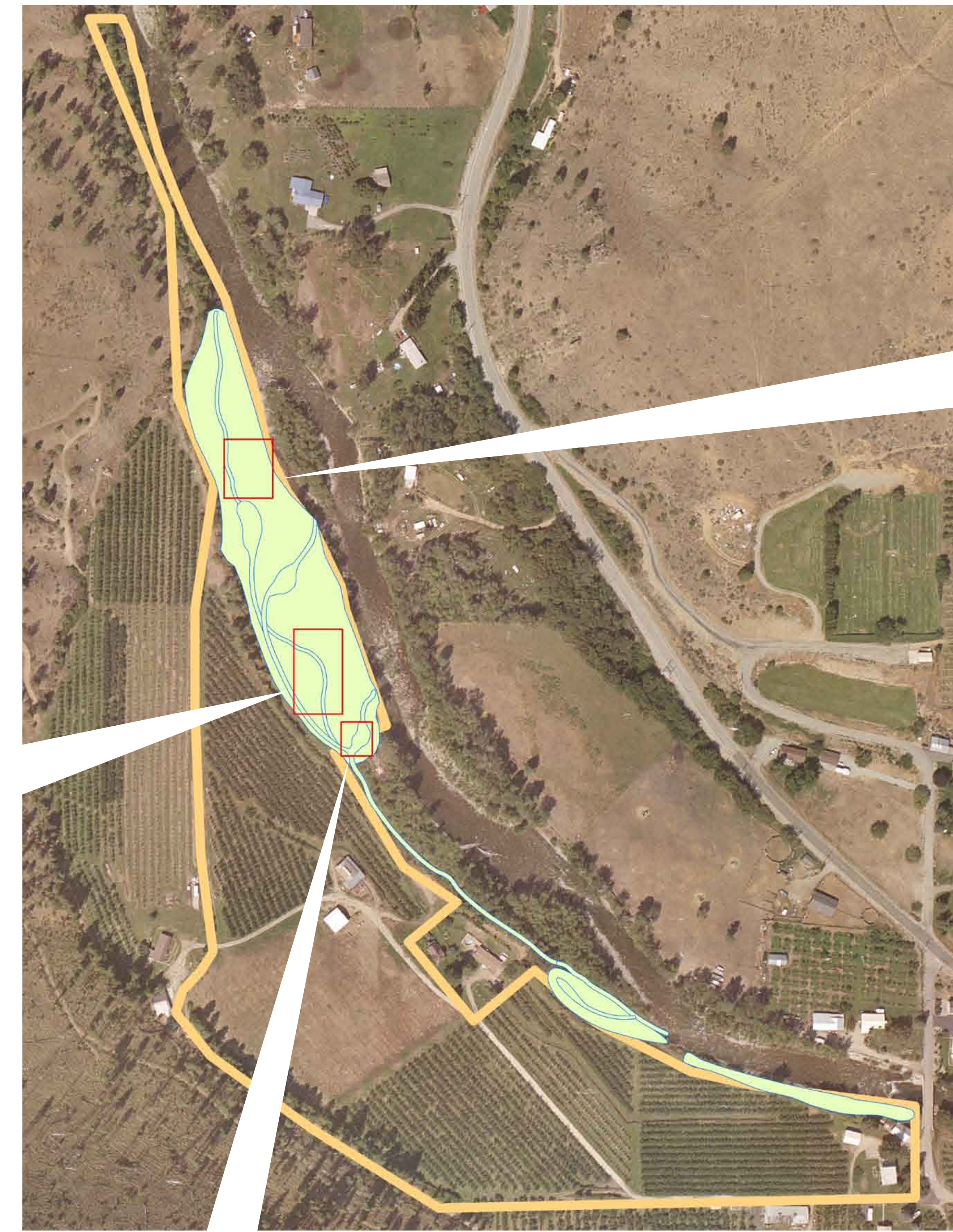
- >> Enhances riparian habitat area
- >> Increases pool habitat area up to 300%
- >> Protects and improves side-channel habitat area
- >> Augments instream flows during low flow period
- >> Synergies with ongoing habitat and flow improvement projects

Next Steps for Demonstration Project:

- >> Test economic feasibility
- >> Address regulatory issues
- >> Discuss applicability to other orchards in north-central Washington

Findings summarized from report entitled "Habitat Farming Enterprise Program Conceptual Riparian and Aquatic Habitat Area Restoration Plan" (GeoEngineers 2007).

ENHANCED CHANNEL HABITAT



ENHANCED RIPARIAN HABITAT



ENHANCED POOL HABITAT



Envisioning a Preferred Future

Habitat Farming Enterprise Program

IRIS Feasibility Study Programmatic Findings

WHY FARM HABITAT?

Family Farm Benefits:

- >> Provides alternate crop options for farmers
- >> Diversifies family-farm income
- >> Builds market for alternative crops
- >> Helps maintain family farm lifestyle
- >> Helps keep good farmers on the ground

Private Landowners Providing Public Benefits:

- >> Protects open space and rural character
- >> Increases water quality, groundwater recharge and infiltration
- >> Provides natural flood protection
- >> Increases habitat values

Demonstration Site For:

- >> Determining technical needs
- >> Testing economic feasibility
- >> Addressing regulatory issues

SPONSORED BY: Chelan County
Entiat Watershed Planning Unit (EWPU)
Initiative for Rural Innovation and Stewardship (IRIS)
North Central Washington Resource Conservation and Development Council (NCW RC&D)
The Washington Biodiversity Council (WBC)
Washington Rivers Conservancy (WRC)

